

ASH FLOOR PLAN

Two Story | 3,126 SQ. FT. | 4-6 Bedrooms | 3-4 Baths | 2 Car Garage



Craftsman



Farmhouse



Prairie

YOURVIEWHOME.COM



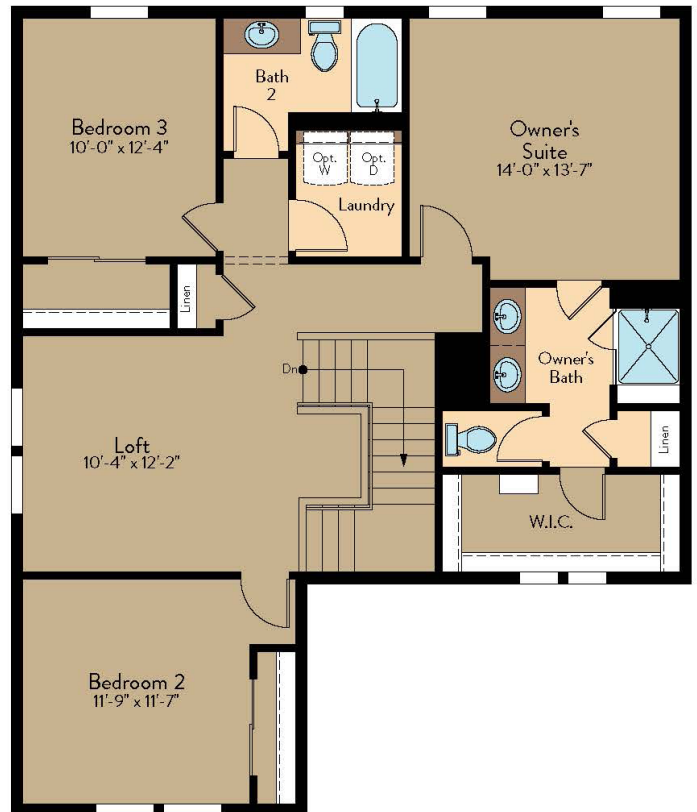
Prices, plans, features, and options are subject to change without notice. All square footage is approximate and varies by elevation. Additional restrictions may apply. See Sales Representative for details. 1/2024

ASH FLOOR PLAN

Two Story | 3,126 SQ. FT. | 4-6 Bedrooms | 3-4 Baths | 2 Car Garage



Main Level



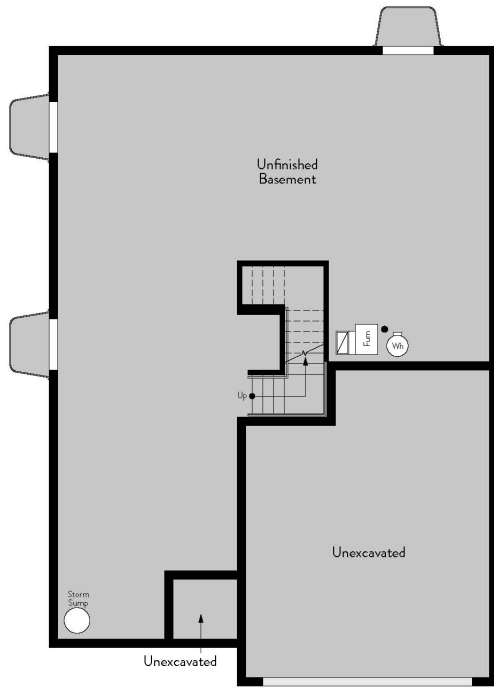
Upper Level

YOURVIEWHOME.COM

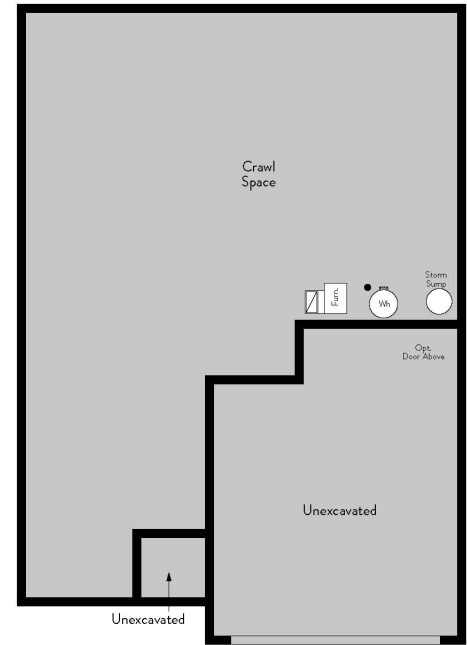


ASH BASEMENT

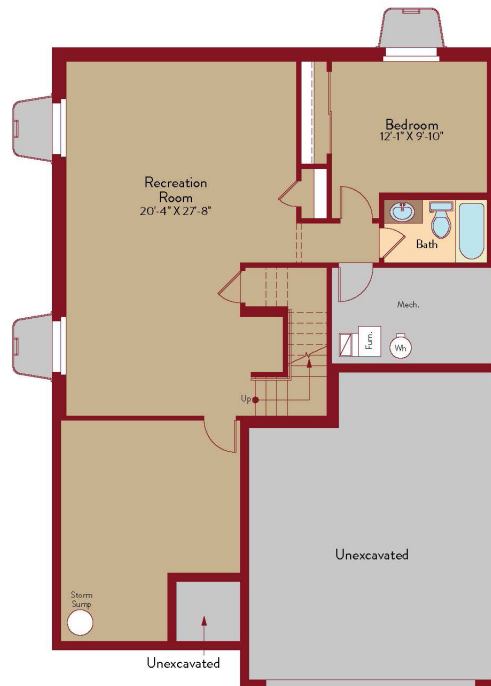
Two Story | 3,126 SQ. FT. | 4-6 Bedrooms | 3-4 Baths | 2 Car Garage



Unfinished Basement



Crawl Space



Opt. Finished Basement Plan

YOURVIEWHOME.COM



ASH OPTIONS

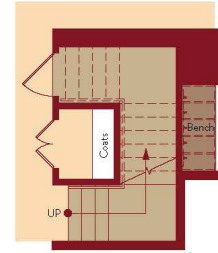
Two Story | 3,126 SQ. FT. | 4-6 Bedrooms | 3-4 Baths | 2 Car Garage



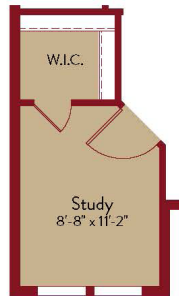
Opt. 5 Piece Master Bath



Opt. Bedroom 5



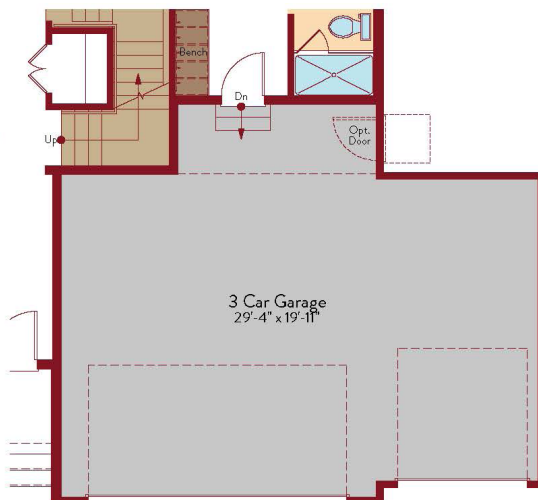
Opt. Crawl Space Access At Main Level



Opt. Study



Opt. Pocket Office



Opt. 3 Car Garage



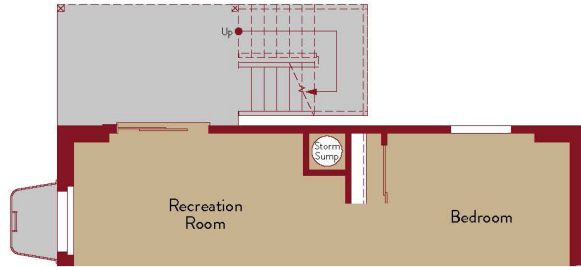
Opt. Fireplace

YOURVIEWHOME.COM

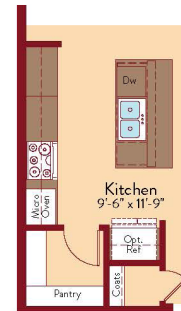


ASH OPTIONS

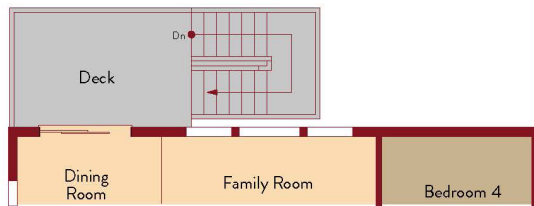
Two Story | 3,126 SQ. FT. | 4-6 Bedrooms | 3-4 Baths | 2 Car Garage



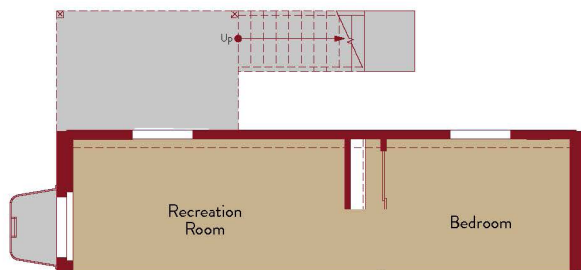
Opt. Walkout Basement



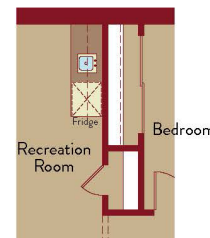
Opt. Gourmet Kitchen



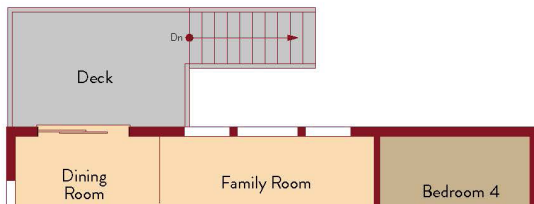
Opt. Walkout First Floor



Opt. Daylight Basement



Opt. Wet Bar



Opt. Daylight First Floor

YOURVIEWHOME.COM

