

THOUGHTFUL  
HOME SERIES

CALYPSO FLOOR PLAN



CRAFTSMAN




FARMHOUSE



PRAIRIE

[YOURVIEWHOME.COM/WILLOWSPRINGS](http://YOURVIEWHOME.COM/WILLOWSPRINGS) • 719.374.3418

 Prices, plans, features, and options are subject to change without notice. All square footage is approximate and varies by elevation. Additional restrictions may apply. See Sales Representative for details. 05/2022

ASPEN  
VIEW  
HOMES

# THOUGHTFUL

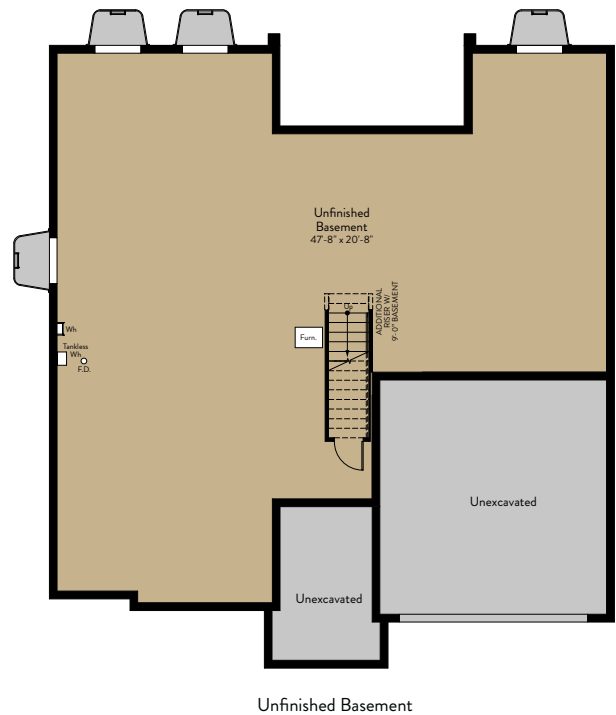
HOME SERIES

## CALYPSO FLOOR PLAN

Single Story | 1,793 SQ. FT. | 3 Bedrooms | 2.5 Baths | 2 Car Garage



Main Level Floor Plan



[YOURVIEWHOME.COM/WILLOWSPRINGS](http://YOURVIEWHOME.COM/WILLOWSPRINGS) • 719.374.3418



Prices, plans, features, and options are subject to change without notice. All square footage is approximate and varies by elevation. Additional restrictions may apply. See Sales Representative for details. 05/2022

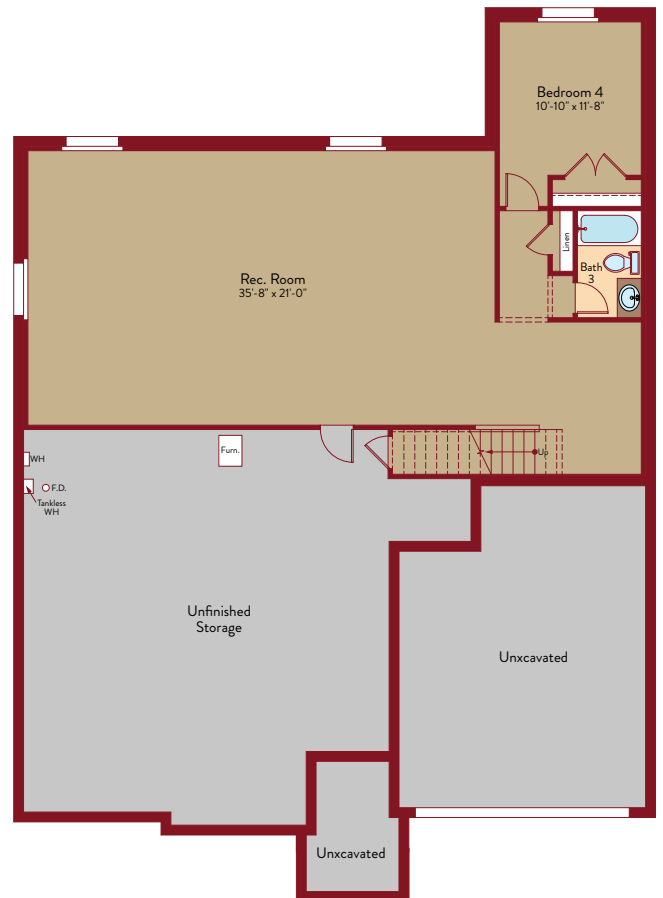
ASPEN  
VIEW  
HOMES

## CALYPSO OPTIONS

Single Story | 1,793 SQ. FT. | 3 Bedrooms | 2.5 Baths | 2 Car Garage



Finished Basement

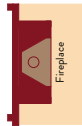


Opt. Finished Basement

# THOUGHTFUL HOME SERIES

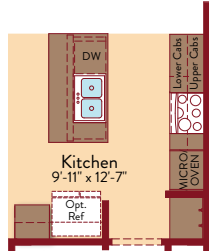
## CALYPSO OPTIONS

Single Story | 1,793 SQ. FT. | 3 Bedrooms | 2.5 Baths | 2 Car Garage

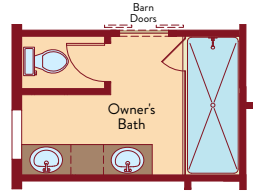


Family Room  
16'-7" x 15'-4"

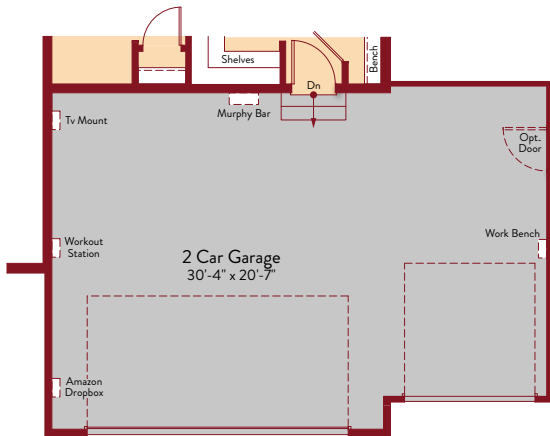
Opt. Fireplace



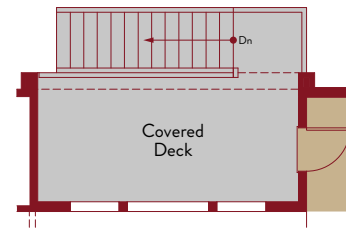
Opt. Gourmet Kitchen



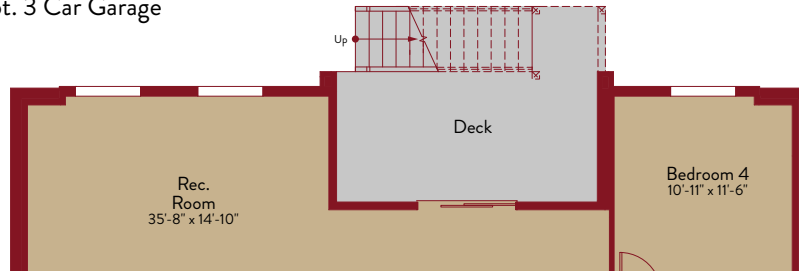
Opt. 4 Piece Bath



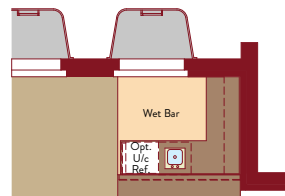
Opt. 3 Car Garage



Opt. First Floor Covered Deck



Opt. Walkout Basement



Opt. Wet Bar

[YOURVIEWHOME.COM/WILLOWSPRINGS](http://YOURVIEWHOME.COM/WILLOWSPRINGS) • 719.374.3418



Prices, plans, features, and options are subject to change without notice. All square footage is approximate and varies by elevation. Additional restrictions may apply. See Sales Representative for details. 05/2022

ASPEN  
VIEW  
HOMES