

THOUGHTFUL  
HOME SERIES

CRESSIDA FLOOR PLAN



[YOURVIEWHOME.COM/WILLOWSPRINGS](https://yourviewhome.com/willowsprings) • 719.374.3418



Prices, plans, features, and options are subject to change without notice. All square footage is approximate and varies by elevation. Additional restrictions may apply. See Sales Representative for details. 05/2022

ASPEN  
VIEW  
HOMES

# THOUGHTFUL

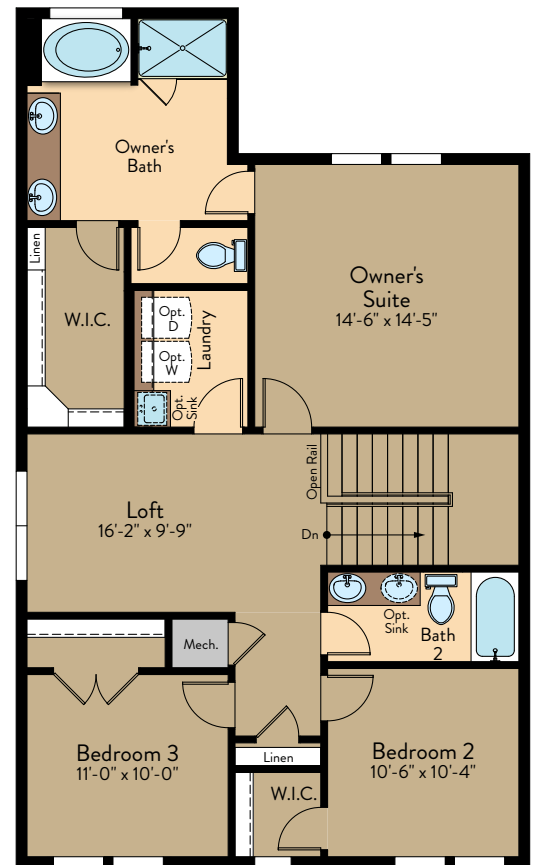
HOME SERIES

## CRESSIDA FLOOR PLAN

Two Story | 2,544 SQ. FT. | 4 Bedrooms | 3 Baths | 2 Car Garage



Main Level Floor Plan



Upper Level Floor Plan

[YOURVIEWHOME.COM/WILLOWSPRINGS](http://YOURVIEWHOME.COM/WILLOWSPRINGS) • 719.374.3418



Prices, plans, features, and options are subject to change without notice. All square footage is approximate and varies by elevation. Additional restrictions may apply. See Sales Representative for details. 05/2022

ASPEN  
VIEW  
HOMES

# THOUGHTFUL HOME SERIES

## CRESSIDA OPTIONS

Two Story | 2,544 SQ. FT. | 4 Bedrooms | 3 Baths | 2 Car Garage



Unfinished Basement



Opt. Finished Basement

[YOURVIEWHOME.COM/WILLOWSPRINGS](http://YOURVIEWHOME.COM/WILLOWSPRINGS) • 719.374.3418



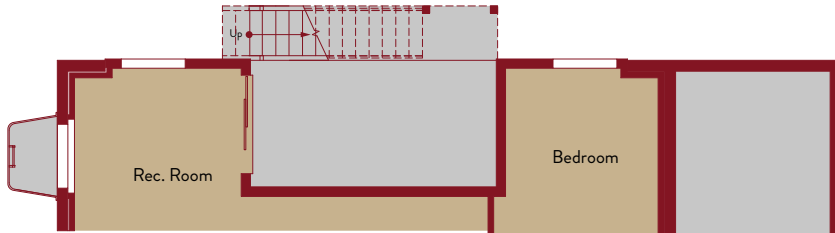
Prices, plans, features, and options are subject to change without notice. All square footage is approximate and varies by elevation. Additional restrictions may apply. See Sales Representative for details. 05/2022

ASPEN  
VIEW  
HOMES

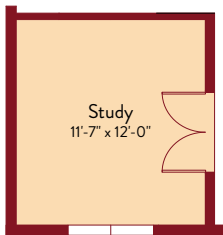
# THOUGHTFUL HOME SERIES

## CRESSIDA OPTIONS

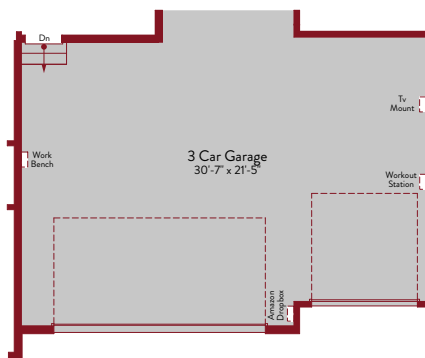
Two Story | 2,544 SQ. FT. | 4 Bedrooms | 3 Baths | 2 Car Garage



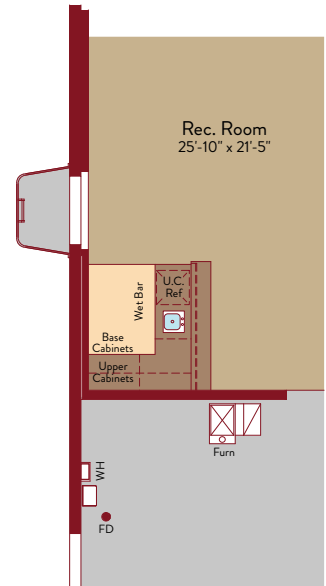
Opt. Walkout Basement



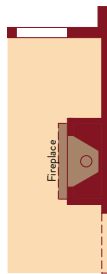
Opt. Study



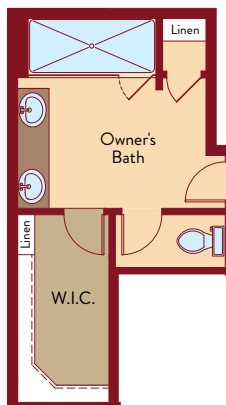
Opt. 3 Car Garage



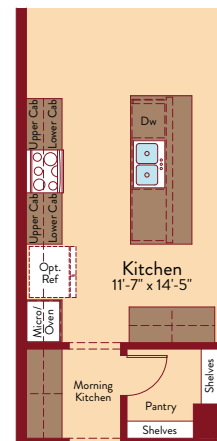
Opt. Wet Bar



Opt. Fireplace



Opt. 4 Piece Bath



Opt. Gourmet Kitchen

[YOURVIEWHOME.COM/WILLOWSPRINGS](http://YOURVIEWHOME.COM/WILLOWSPRINGS) • 719.374.3418



Prices, plans, features, and options are subject to change without notice. All square footage is approximate and varies by elevation. Additional restrictions may apply. See Sales Representative for details. 05/2022

ASPEN  
VIEW  
HOMES