

THOUGHTFUL  
HOME SERIES

JULIET FLOOR PLAN



CRAFTSMAN




FARMHOUSE



PRAIRE

[YOURVIEWHOME.COM/WILLOWSPRINGS](http://YOURVIEWHOME.COM/WILLOWSPRINGS) • 719.374.3418

 Prices, plans, features, and options are subject to change without notice. All square footage is approximate and varies by elevation. Additional restrictions may apply. See Sales Representative for details. 05/2022

ASPEN  
VIEW  
HOMES

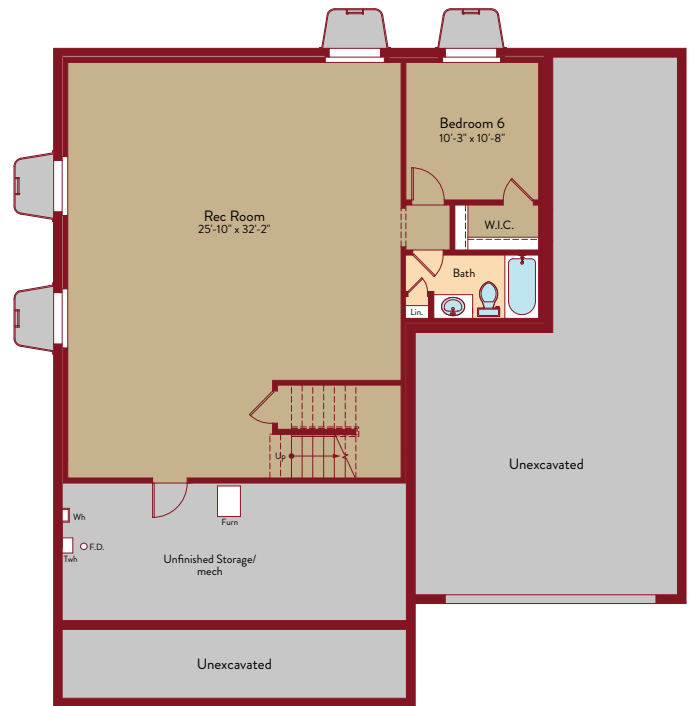


JULIET OPTIONS

Two Story | 2,907 SQ. FT. | 5 Bedrooms | 3 Baths | 2 Car Garage



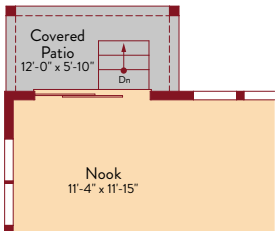
Unfinished Basement



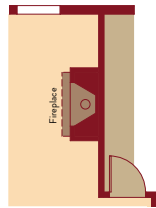
Finished Basement

JULIET OPTIONS

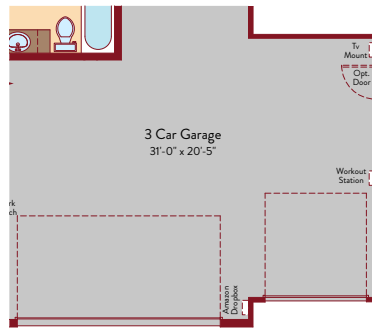
Two Story | 2,907 SQ. FT. | 5 Bedrooms | 3 Baths | 2 Car Garage



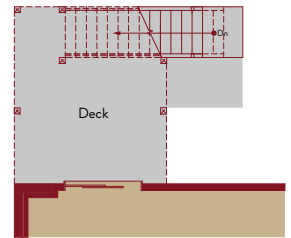
Opt. 4' Patio Extension



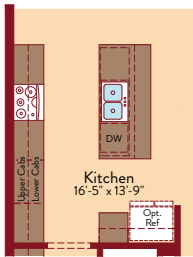
Opt. Fireplace



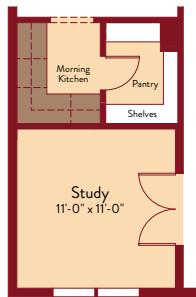
Opt. 3 Car Garage



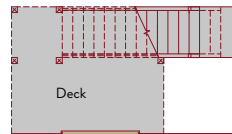
Opt. 4' Deck Extension At  
Opt. Walkout Basement



Opt. Gourmet Kitchen



Opt. Study



Opt. Walkout Basement



Opt. Wet Bar

