

THOUGHTFUL
HOME SERIES

REJUVENATE FLOOR PLAN



CRAFTSMAN




FARMHOUSE



FOOTHILLS

YOURVIEWHOME.COM/WILLOWSPRINGS • 719.374.3418

 Prices, plans, features, and options are subject to change without notice. All square footage is approximate and varies by elevation. Additional restrictions may apply. See Sales Representative for details. 01/2023

ASPEN
VIEW
HOMES

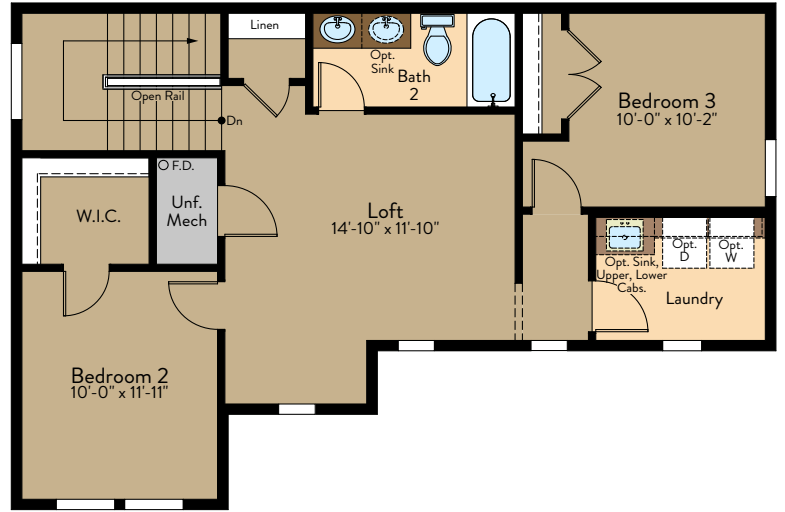
THOUGHTFUL HOME SERIES

REJUVENATE FLOOR PLAN

Two Story | 2,355 SQ. FT. | 3 Bedrooms | 2.5 Baths | 2 Car Garage



Main Level



Upper Level

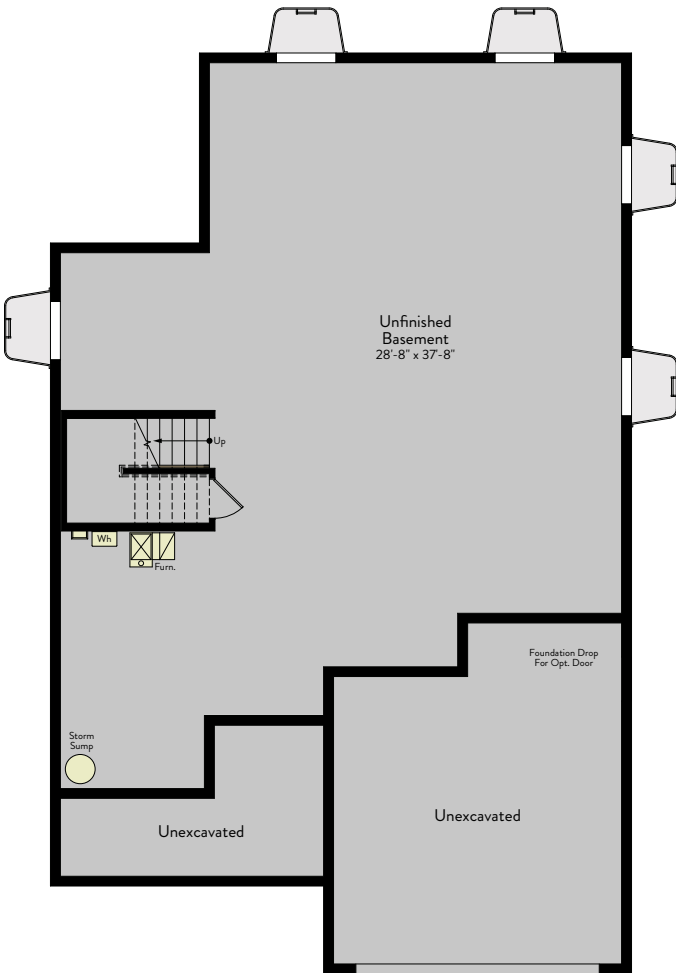
YOURVIEWHOME.COM/WILLOWSPRINGS • 719.374.3418

Prices, plans, features, and options are subject to change without notice. All square footage is approximate and varies by elevation. Additional restrictions may apply. See Sales Representative for details. 01/2023

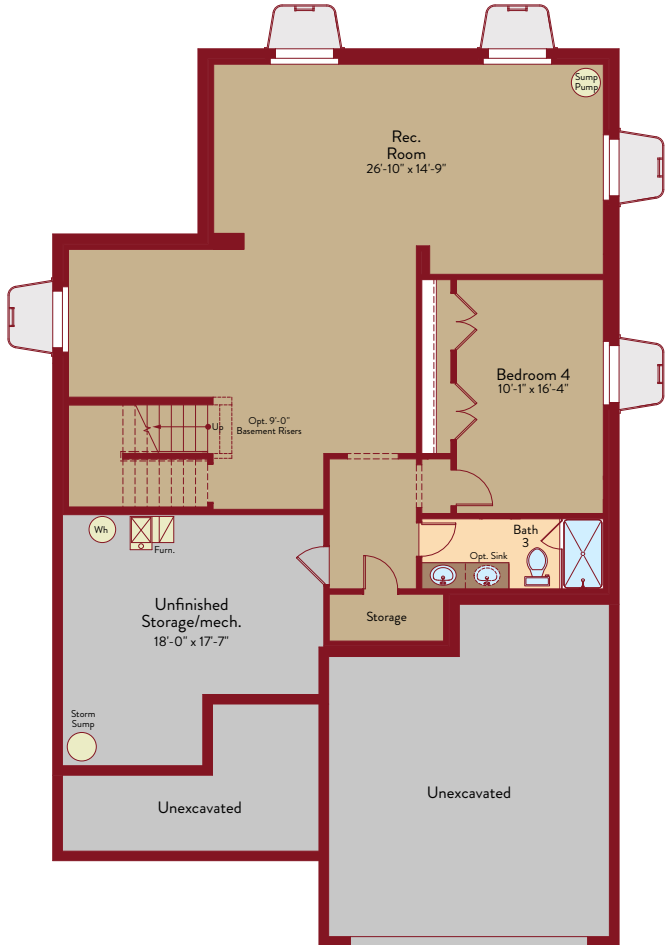


REJUVENATE OPTIONS

Two Story | 2,355 SQ. FT. | 3 Bedrooms | 2.5 Baths | 2 Car Garage



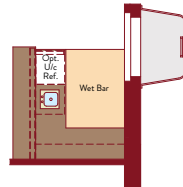
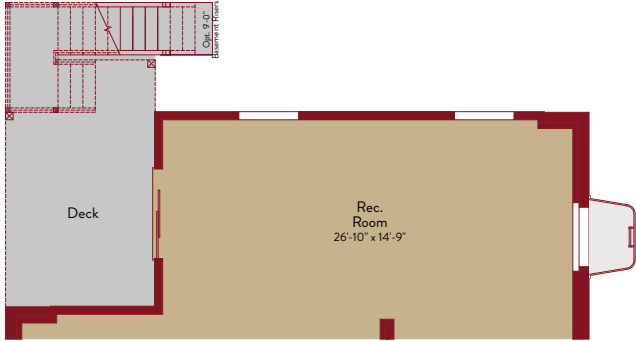
Unfinished Basement



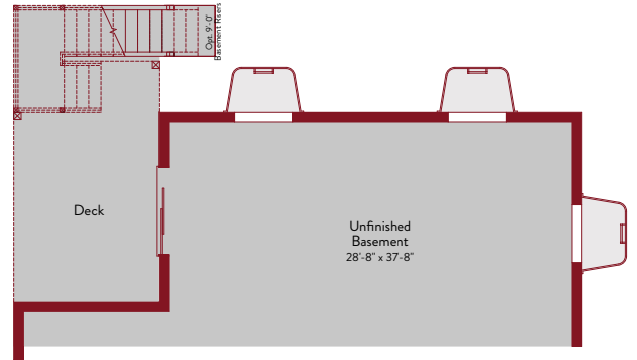
Opt. Finished Basement

REJUVENATE OPTIONS

Two Story | 2,355 SQ. FT. | 3 Bedrooms | 2.5 Baths | 2 Car Garage



Opt. Wet Bar

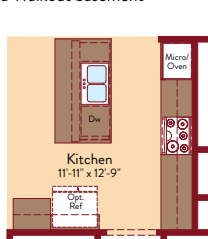


Opt. Finished Walkout Unfinished basement

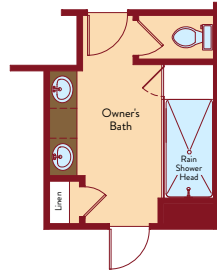
Opt. Finished Walkout basement



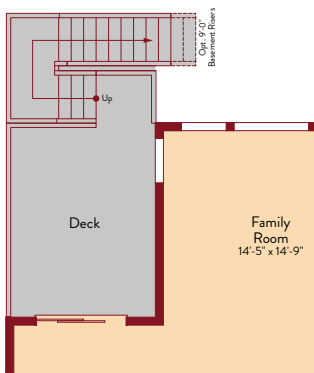
Opt. Fireplace



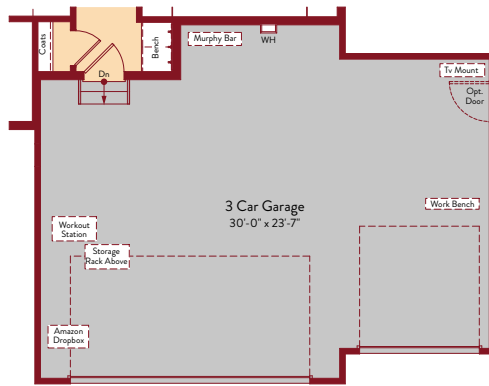
Opt. Gourmet Kitchen



Opt. 4 Piece Bath



Opt. Deck



Opt. 3 Car Garage