

BALSAM FLOOR PLAN

Two Story | 2,297 SQ. FT. | 3 Bedrooms | 2.5 Baths | 3T Car Garage



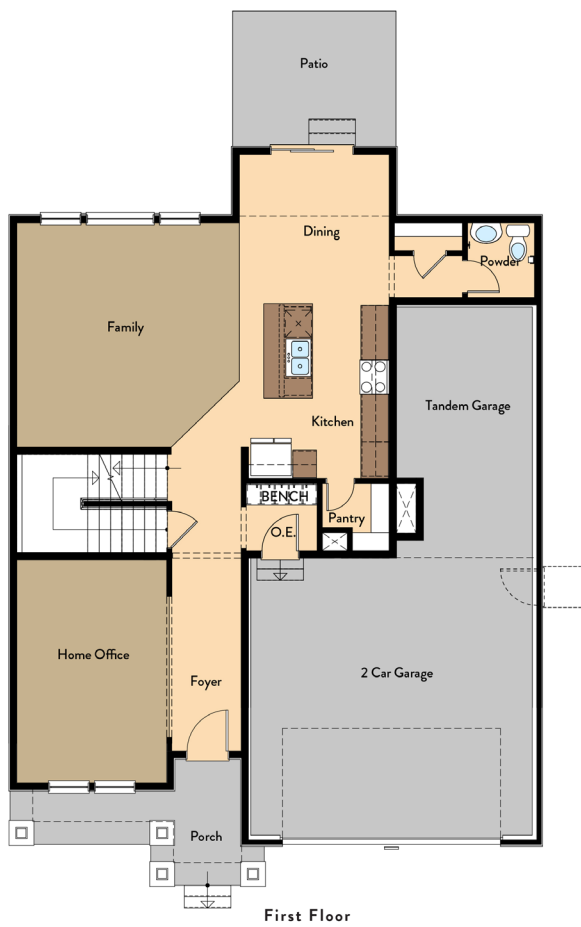
[YOURVIEWHOME.COM](https://www.yourviewhome.com)



Prices, plans, features, and options are subject to change without notice. All square footage is approximate and varies by elevation. Additional restrictions may apply. See Sales Representative for details. 11/2023

BALSAM FLOOR PLAN

Two Story | 2,297 SQ. FT. | 3 Bedrooms | 2.5 Baths | 3T Car Garage



Main Level



Upper Level

YOURVIEWHOME.COM



BALSAM BASEMENT

Two Story | 2,297 SQ. FT. | 3 Bedrooms | 2.5 Baths | 3T Car Garage



Finished Basement

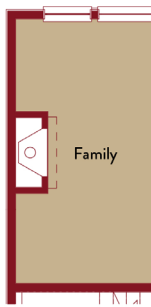


YOURVIEWHOME.COM

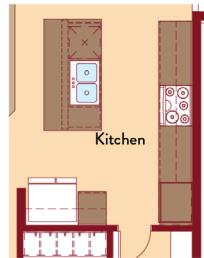


BALSAM OPTIONS

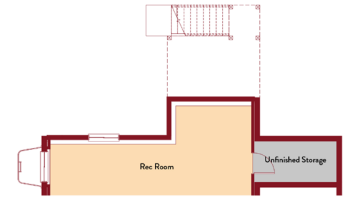
Two Story | 2,297 SQ. FT. | 3 Bedrooms | 2.5 Baths | 3T Car Garage



Opt. Fireplace



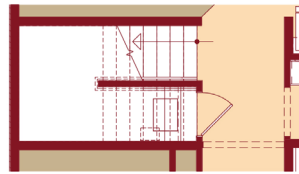
Opt. Gourmet Kitchen



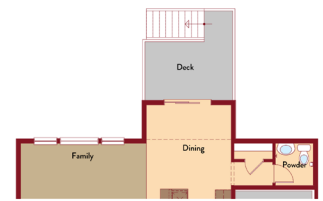
Partial Basement Plan



Opt. Wet Bar

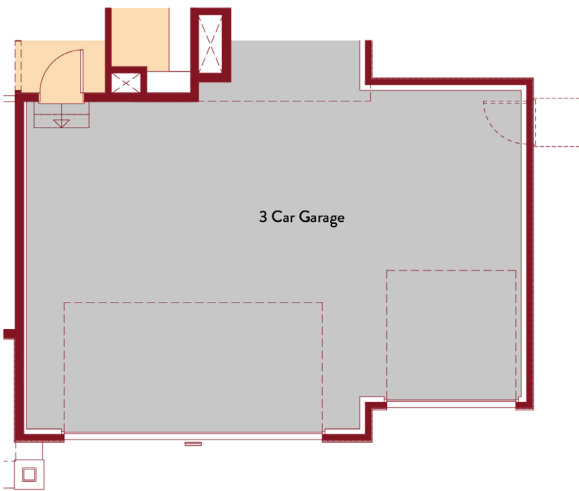


Opt. Crawl Space



Partial Main Floor Plan

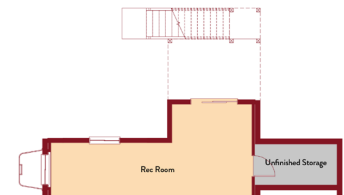
Opt. Daylight Walkout



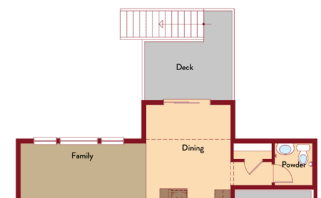
Optional 3rd Car Garage



Bath 2



Partial Basement Plan



Partial Main Floor Plan

Opt. Walkout Walkout

YOURVIEWHOME.COM

