

BOXELDER FLOOR PLAN

Two Story | 2,451 SQ. FT. | 3 Bedrooms | 2.5 Baths | 3T Car Garage



[YOURVIEWHOME.COM](https://www.yourviewhome.com)



Prices, plans, features, and options are subject to change without notice. All square footage is approximate and varies by elevation. Additional restrictions may apply. See Sales Representative for details. 11/2023

BOXELDER FLOOR PLAN

Two Story | 2,451 SQ. FT. | 3 Bedrooms | 2.5 Baths | 3T Car Garage



Main Level



Upper Level

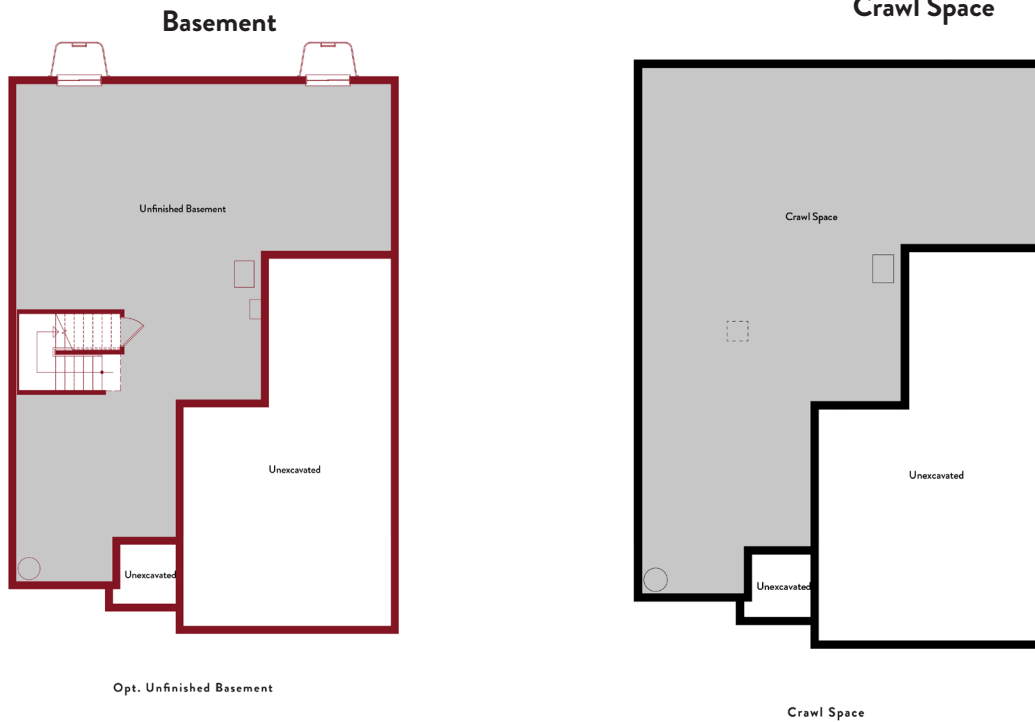
YOURVIEWHOME.COM



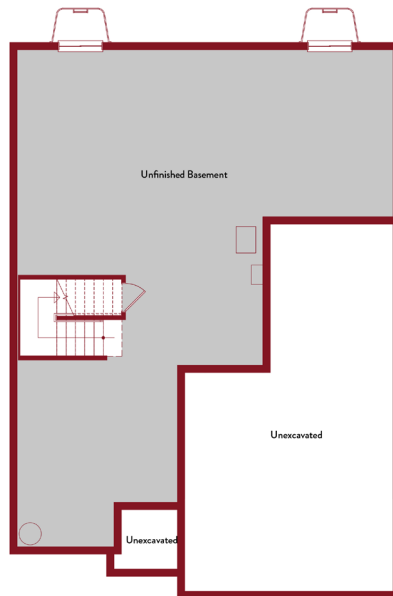
Prices, plans, features, and options are subject to change without notice. All square footage is approximate and varies by elevation. Additional restrictions may apply. See Sales Representative for details. 11/2023

BOXELDER BASEMENT

Two Story | 2,451 SQ. FT. | 3 Bedrooms | 2.5 Baths | 3T Car Garage



Finished Basement

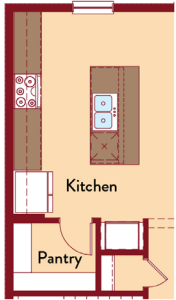


YOURVIEWHOME.COM

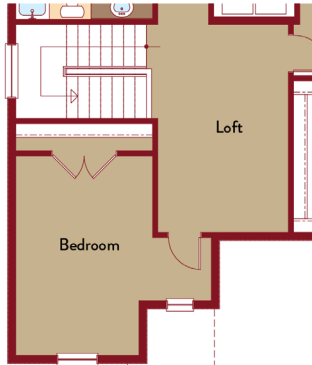


BOXELDER OPTIONS

Two Story | 2,451 SQ. FT. | 3 Bedrooms | 2.5 Baths | 3T Car Garage



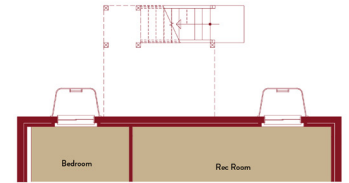
Opt Kitchen



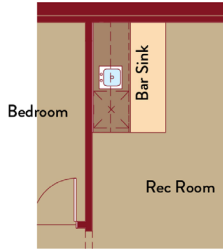
Window And Materials Per Elevation
Opt. Bedroom ILO Loft



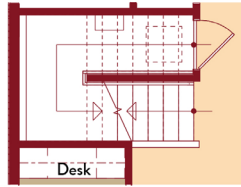
Opt. 5 Piece Bath



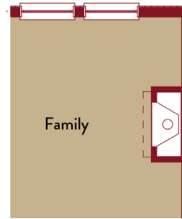
Partial Basement Plan



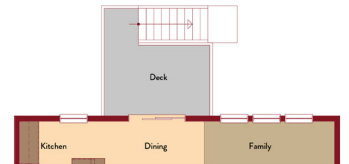
Opt. Wet Bar



Opt. Crawl Space



Opt. Fireplace

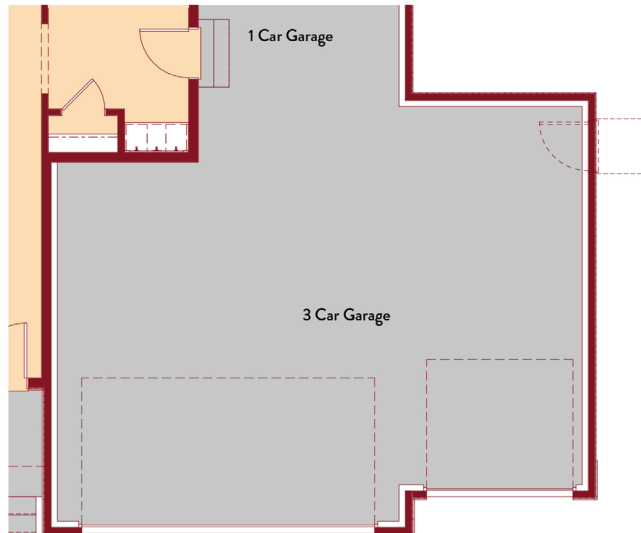


Partial Main Floor Plan

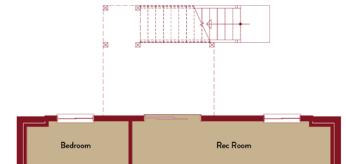
Opt Daylight Basement



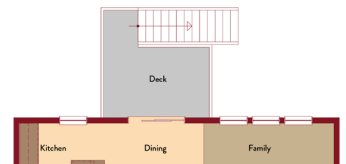
Opt. Pocket Office



Opt. 3rd garage



Partial Basement Plan



Partial Main Floor Plan

Opt Walkout

YOURVIEWHOME.COM

