

JOURNEY FLOOR PLAN

Single Story | 1,939-3,007 SQ. FT. | 3-6 Bedrooms | 2.5-4 Baths | 2-3 Car Garage



FARMHOUSE



CRAFTSMAN



FOOTHILLS

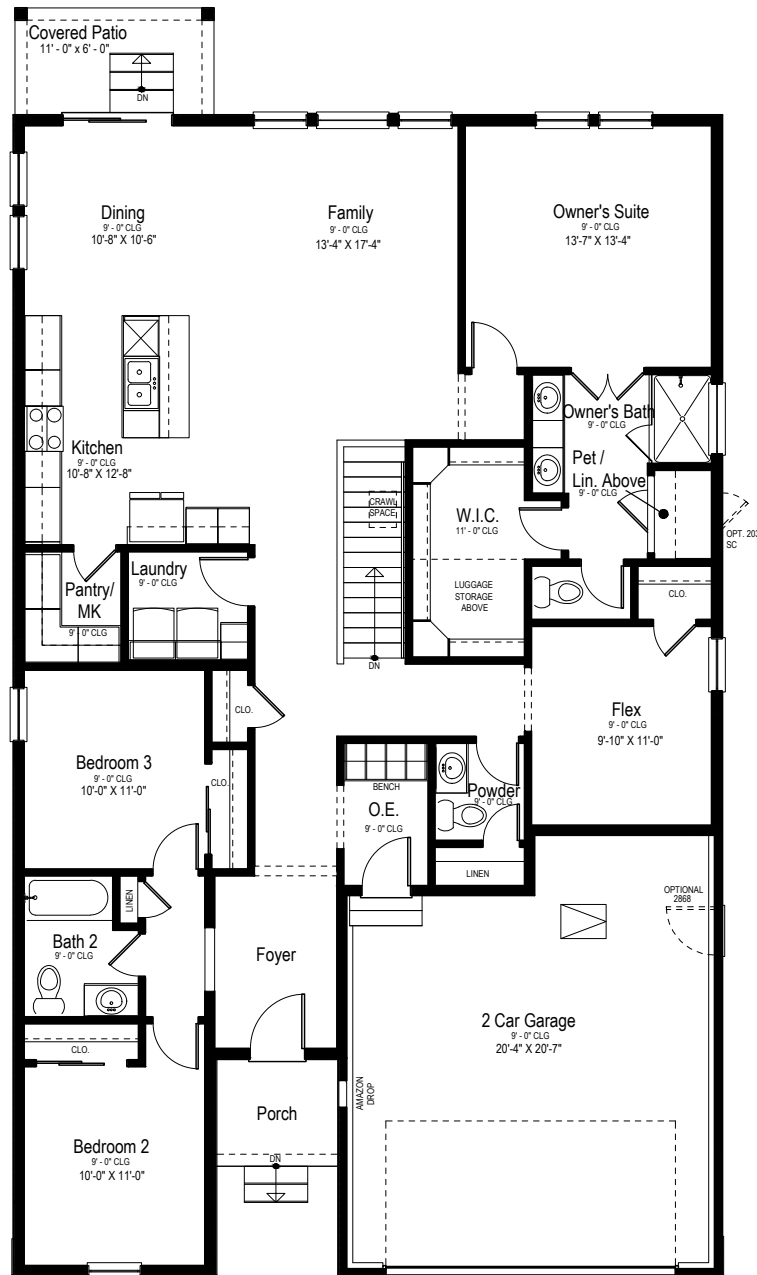
YOURVIEWHOME.COM - 605.484.2951



Prices, plans, features, and options are subject to change without notice. All square footage is approximate and varies by elevation. Additional restrictions may apply. See Sales Representative for details. 6/2023

JOURNEY FLOOR PLAN

Single Story | 1,939-3,007 SQ. FT. | 3-6 Bedrooms | 2.5-4 Baths | 2-3 Car Garage



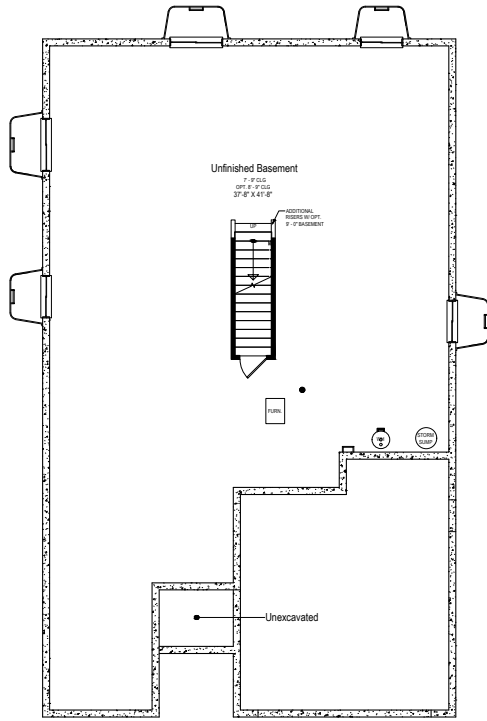
MAIN LEVEL

YOURVIEWHOME.COM - 605.484.2951

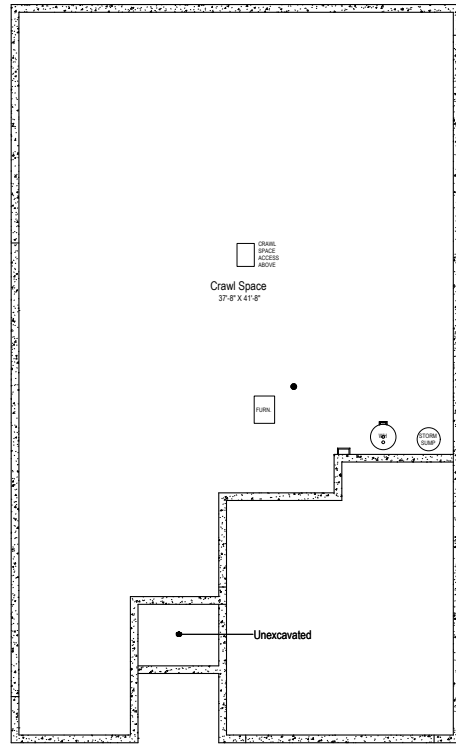


JOURNEY BASEMENT

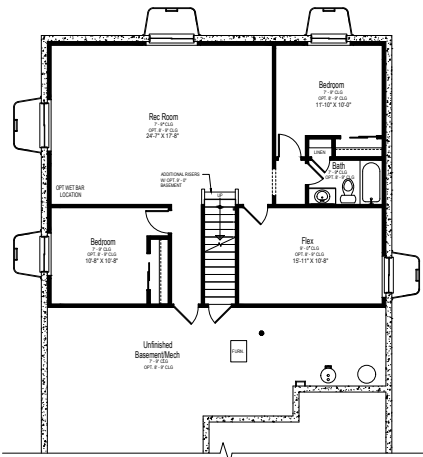
Single Story | 1,939-3,007 SQ. FT. | 3-6 Bedrooms | 2.5-4 Baths | 2-3 Car Garage



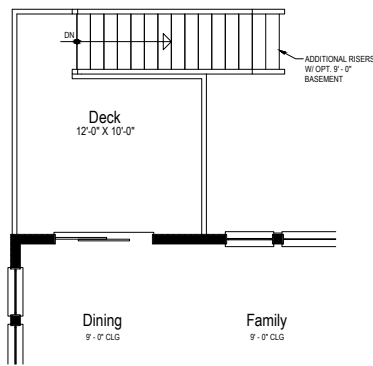
UNFINISHED BASEMENT



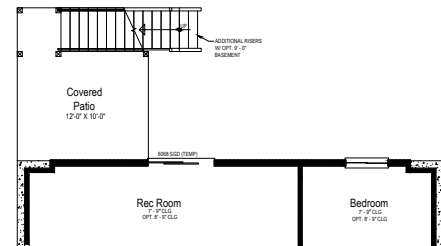
CRAWL SPACE



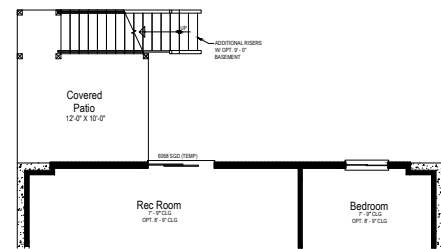
OPT. FINISHED BASEMENT
PARTIAL BASEMENT FLOOR PLAN



OPT WALKOUT BASEMENT
PARTIAL MAIN FLOOR PLAN



OPT WALKOUT BASEMENT
PARTIAL BASEMENT PLAN



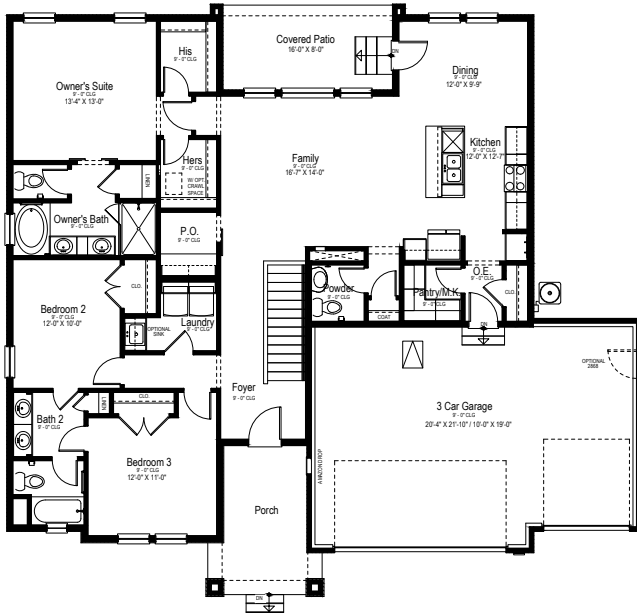
OPT WALKOUT BASEMENT
PARTIAL BASEMENT PLAN

YOURVIEWHOME.COM - 605.484.2951

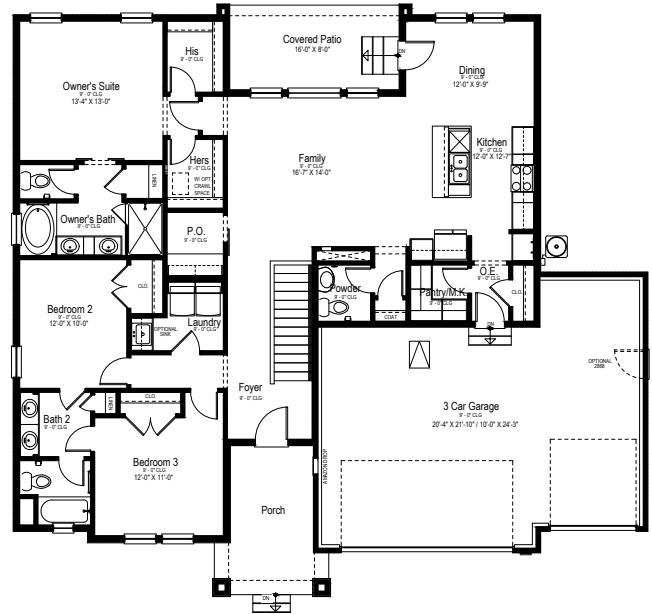


JOURNEY GARAGE

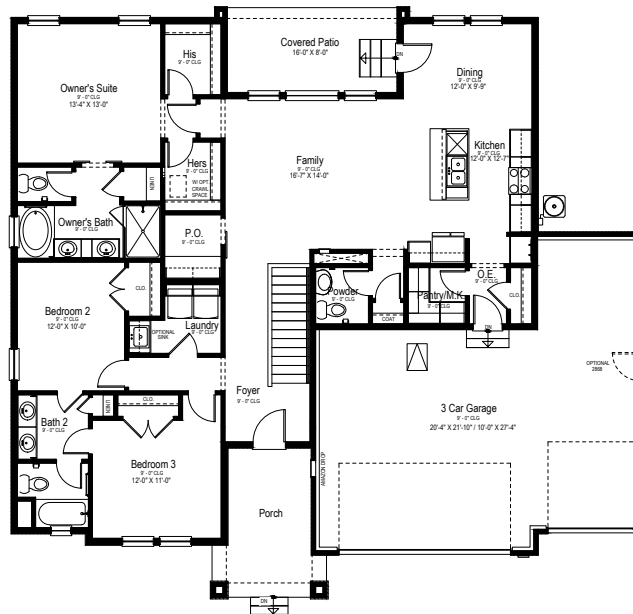
Single Story | 1,939-3,007 SQ. FT. | 3-6 Bedrooms | 2.5-4 Baths | 2-3 Car Garage



FIRST FLOOR - 3 CAR GARAGE (20')



FIRST FLOOR - 3 CAR GARAGE (24')



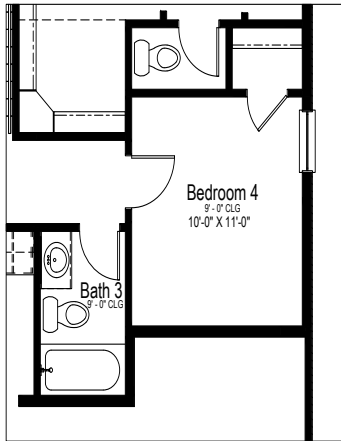
FIRST FLOOR - 3 CAR GARAGE (28')

YOURVIEWHOME.COM - 605.484.2951

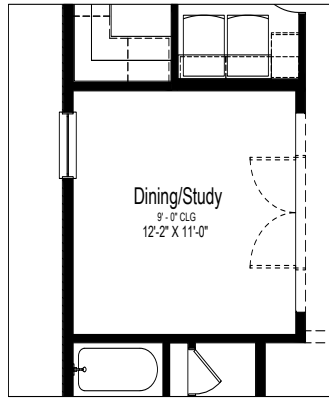


JOURNEY OPTIONS

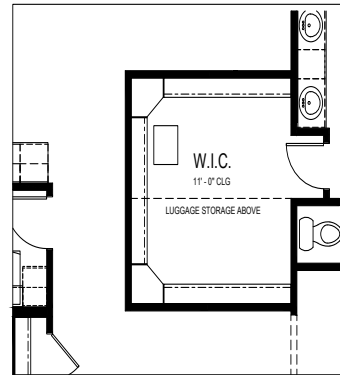
Single Story | 1,939-3,007 SQ. FT. | 3-6 Bedrooms | 2.5-4 Baths | 2-3 Car Garage



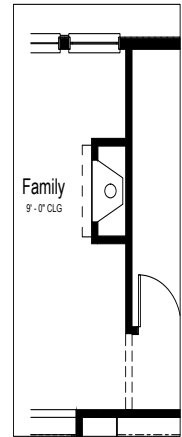
Opt. Bedroom 4
Partial Main Floor Plan



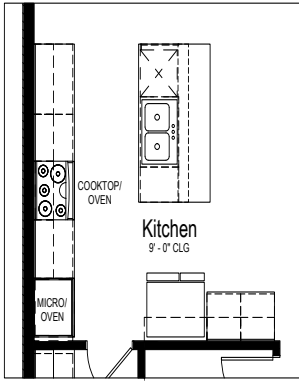
Opt. Dining/Study
Partial Main Floor Plan



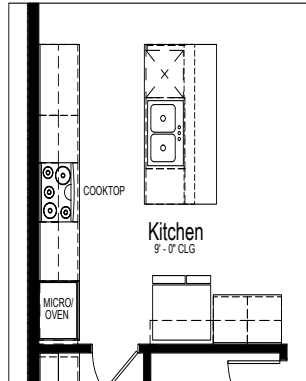
Opt. Crawl Space
Partial Main Floor Plan



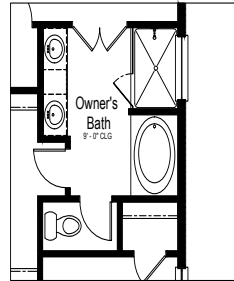
Opt. Fireplace
Partial Main Floor Plan



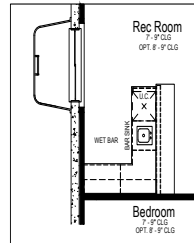
Opt. Gourmet Kitchen 2
Partial Main Floor Plan



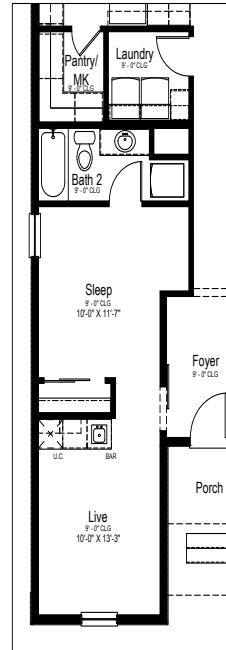
Opt. Gourmet Kitchen
Partial Main Floor Plan



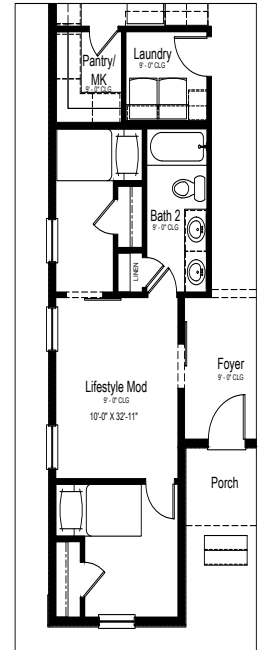
Opt. Owner's Bath 5pc
Partial Main Floor Plan



Opt Wet Bar
Partial Finished Basement Plan



Opt. Multi-Gen Suite
Partial Main Floor Plan



Opt. Lifestyle Mod
Partial Main Floor Plan

YOURVIEWHOME.COM - 605.484.2951

