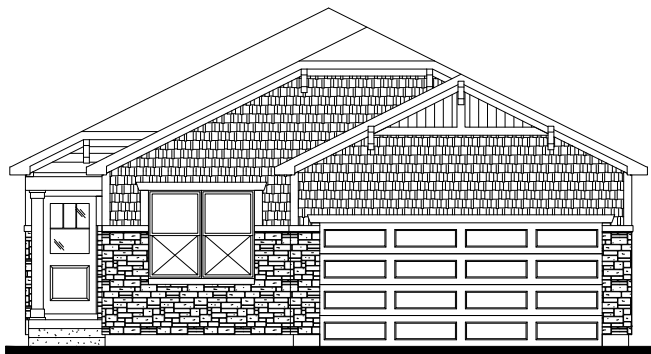


ROUBAIX FLOOR PLAN

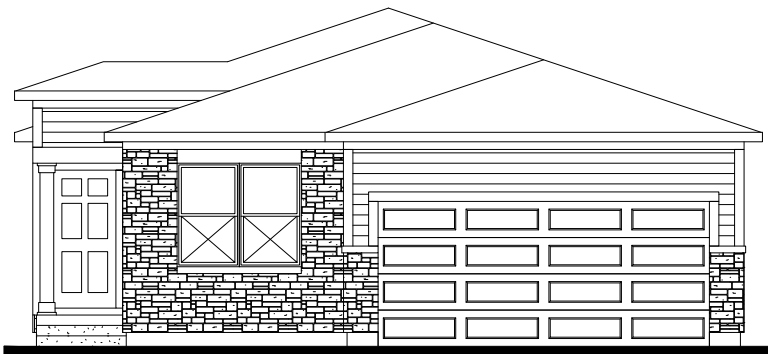
Single Story | 1,521-2,511 SQ. FT. | 3-5 Bedrooms | 2-3 Baths | 2-3 Car Garage



FARMHOUSE



CRAFTSMAN



PRAIRIE

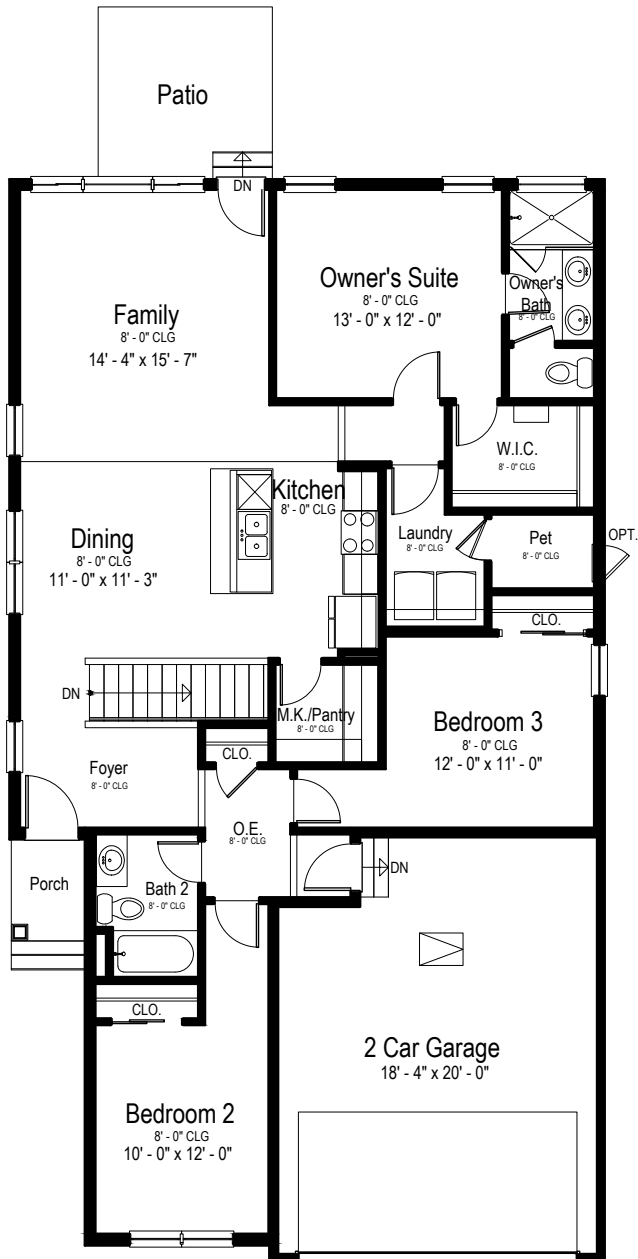
YOURVIEWHOME.COM - 605.484.2951



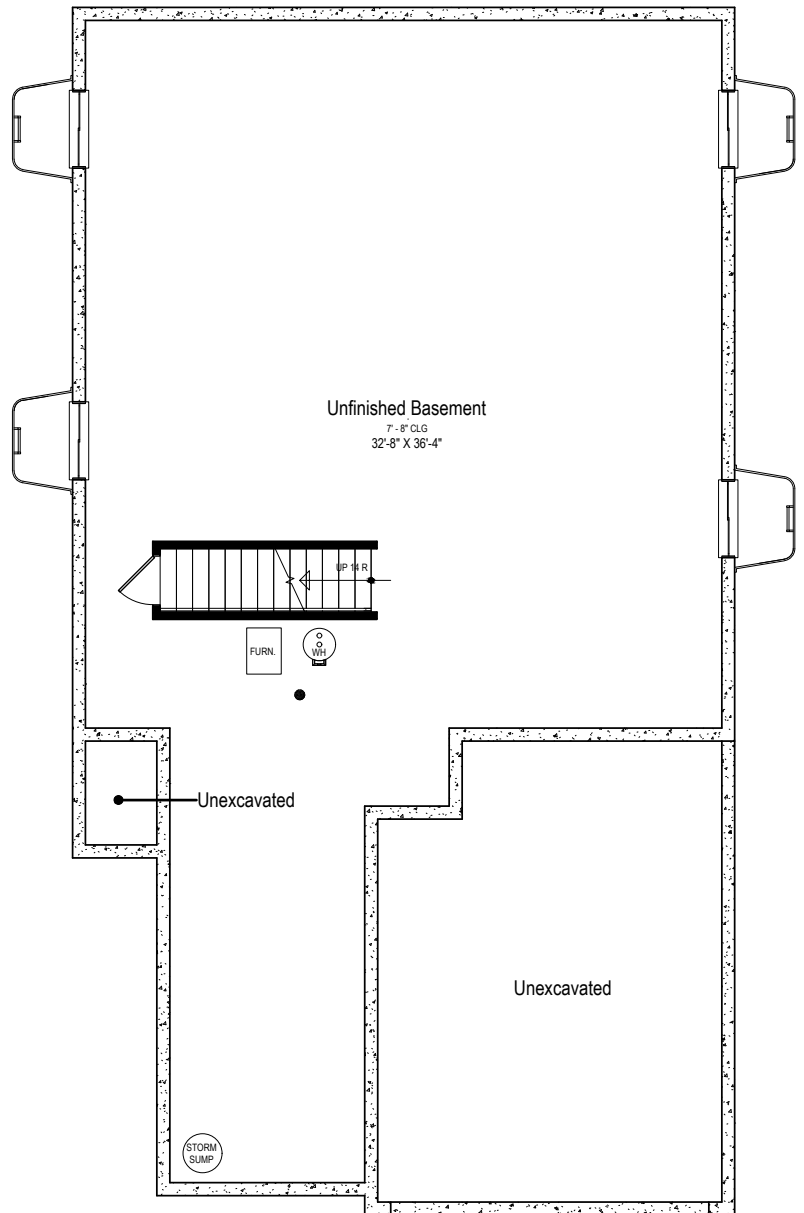
Prices, plans, features, and options are subject to change without notice. All square footage is approximate and varies by elevation. Additional restrictions may apply. See Sales Representative for details. 6/2023

ROUBAIX FLOOR PLAN

Single Story | 1,521-2,511 SQ. FT. | 3-5 Bedrooms | 2-3 Baths | 2-3 Car Garage



MAIN LEVEL



BASEMENT

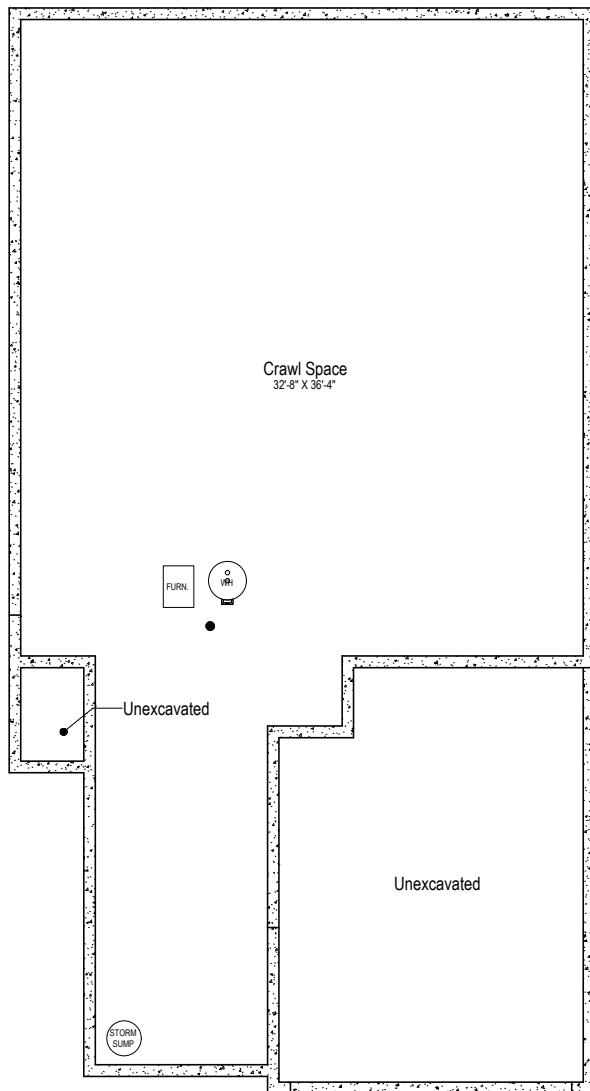
YOURVIEWHOME.COM - 605.484.2951



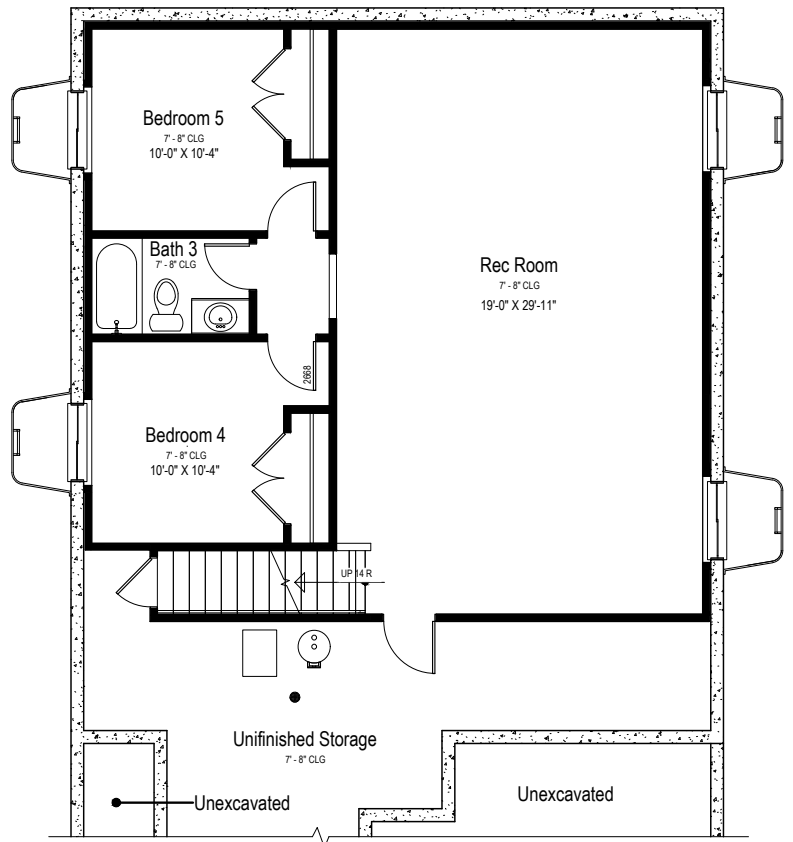
Prices, plans, features, and options are subject to change without notice. All square footage is approximate and varies by elevation. Additional restrictions may apply. See Sales Representative for details. 6/2023

ROUBAIX FLOOR PLAN

Single Story | 1,521-2,511 SQ. FT. | 3-5 Bedrooms | 2-3 Baths | 2-3 Car Garage



CRAWL SPACE



OPT. FINISHED BASEMENT

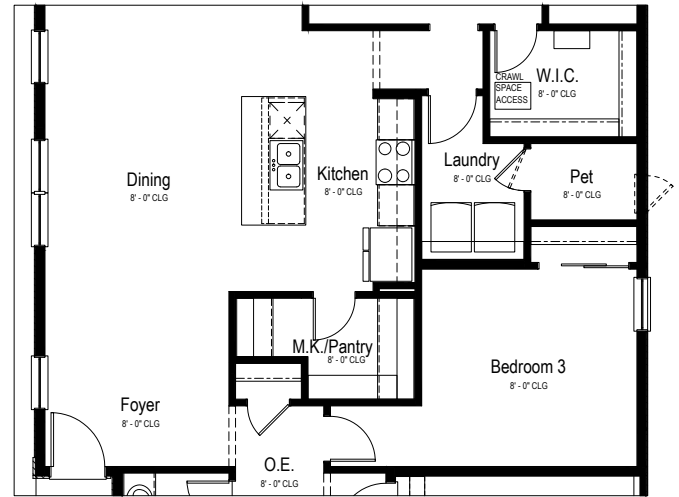
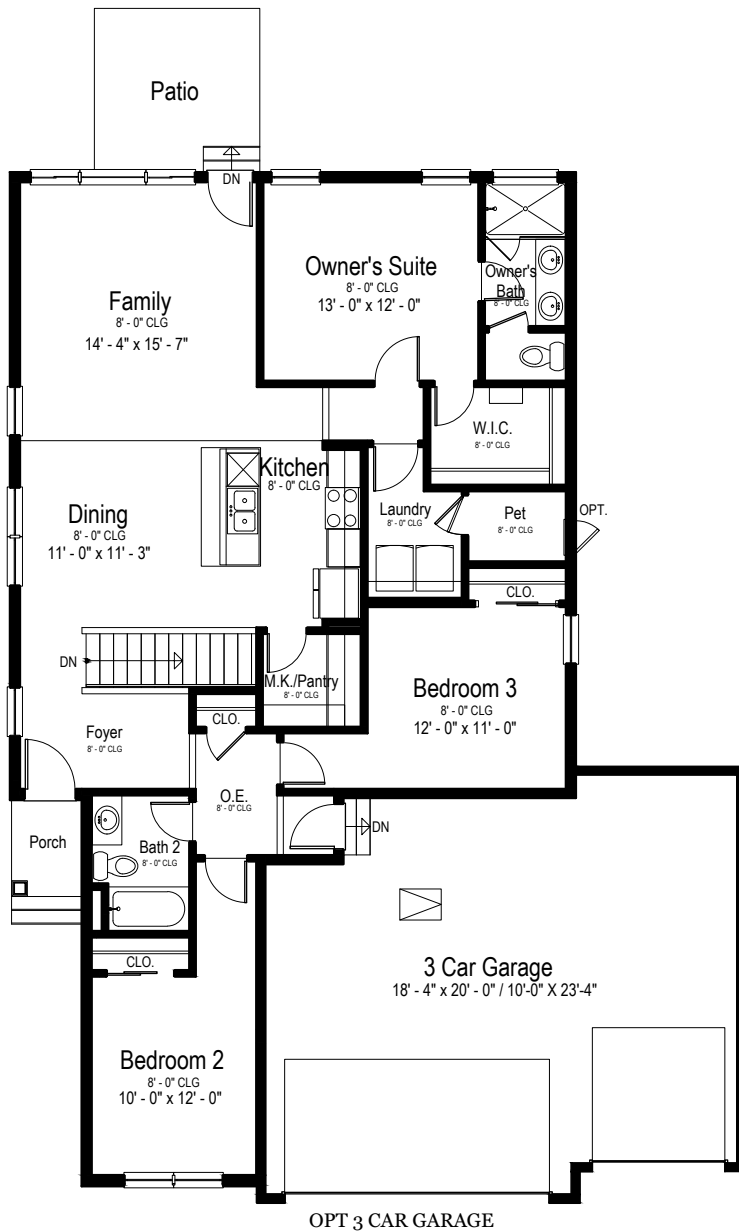
YOURVIEWHOME.COM - 605.484.2951



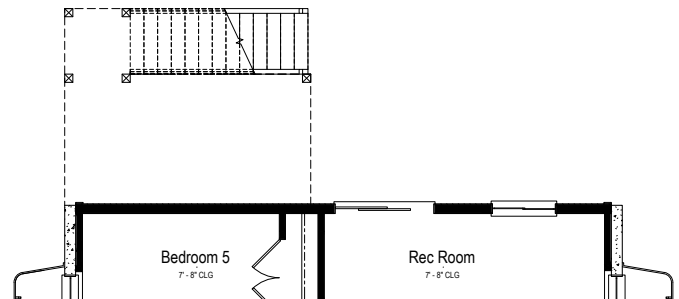
Prices, plans, features, and options are subject to change without notice. All square footage is approximate and varies by elevation. Additional restrictions may apply. See Sales Representative for details. 6/2023

ROUBAIX OPTIONS

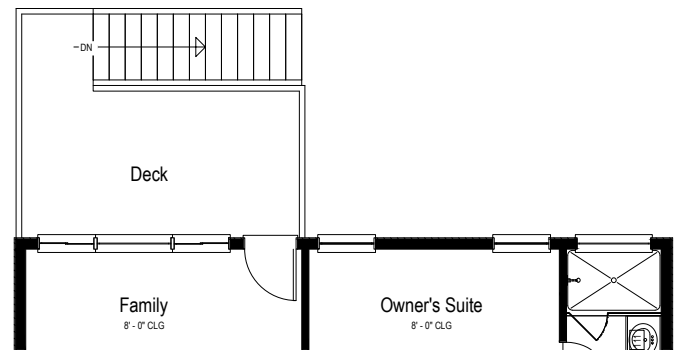
Single Story | 1,521-2,511 SQ. FT. | 3-5 Bedrooms | 2-3 Baths | 2-3 Car Garage



OPT. CRAWL SPACE



OPT WALKOUT BASEMENT
PARTIAL BASEMENT PLAN



OPT WALKOUT BASEMENT
PARTIAL MAIN FLOOR PLAN

YOURVIEWHOME.COM - 605.484.2951



Prices, plans, features, and options are subject to change without notice. All square footage is approximate and varies by elevation. Additional restrictions may apply. See Sales Representative for details. 6/2023