

PALMER FLOOR PLAN

Two Story | 1,722 SQ. FT. | 3 Bedrooms | 2.5 Baths | 2 Car Garage



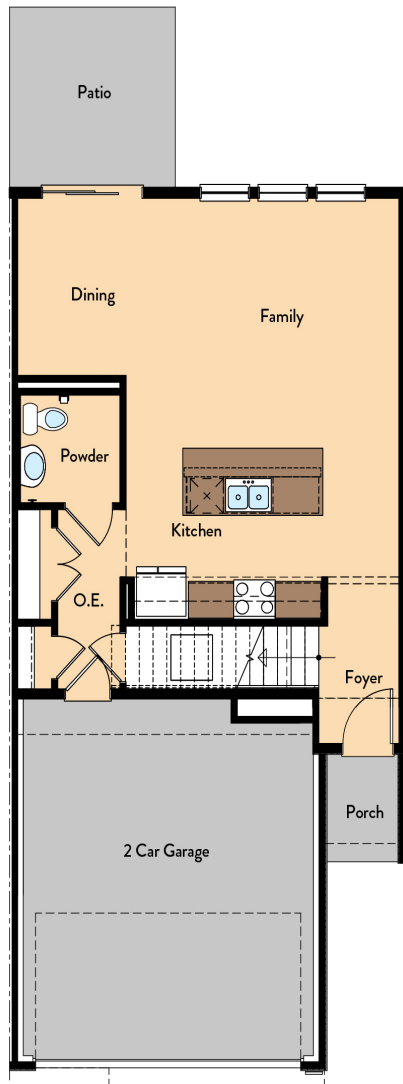
YOURVIEWHOME.COM



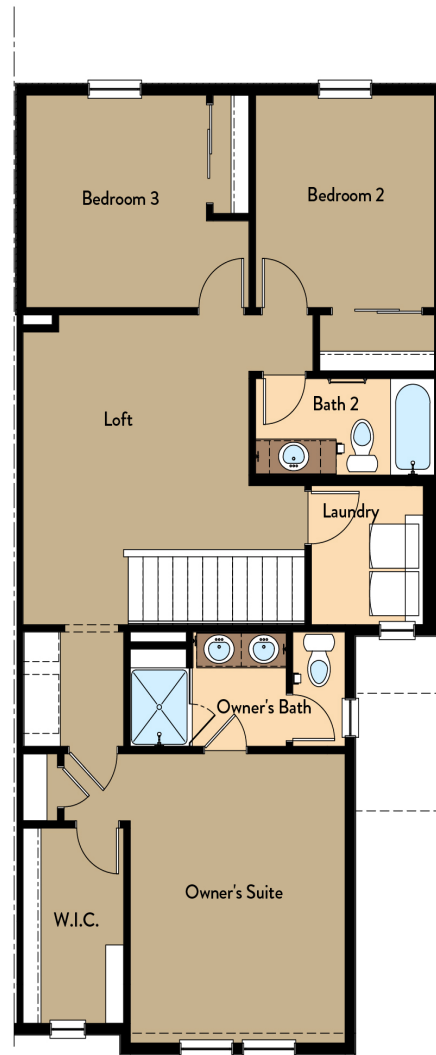
Prices, plans, features, and options are subject to change without notice. All square footage is approximate and varies by elevation. Additional restrictions may apply. See Sales Representative for details. 10/2023

PALMER FLOOR PLAN

Two Story | 1,722 SQ. FT. | 3 Bedrooms | 2.5 Baths | 2 Car Garage



Main Level



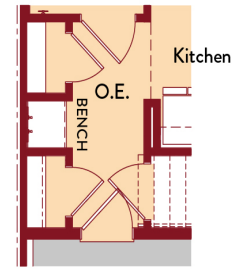
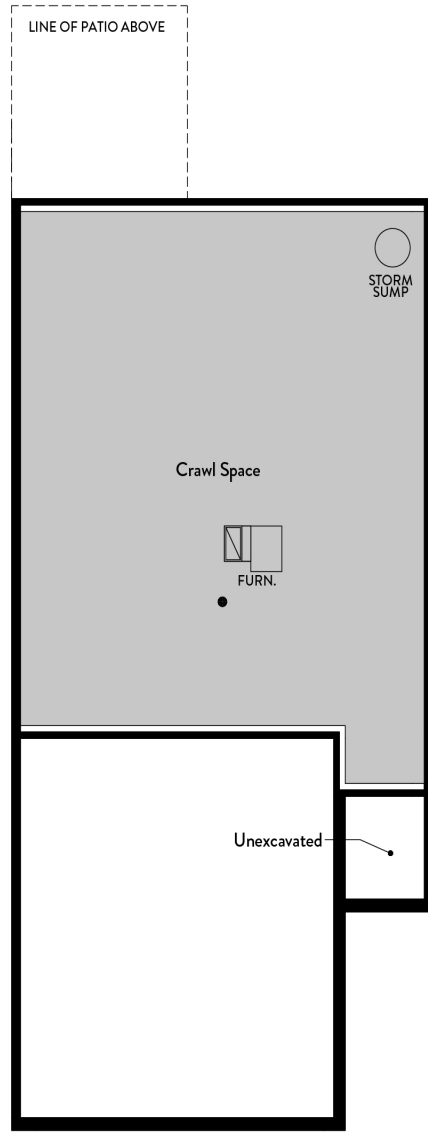
Upper Level

YOURVIEWHOME.COM



PALMER OPTIONS

Two Story | 1,722 SQ. FT. | 3 Bedrooms | 2.5 Baths | 2 Car Garage



Opt. Drop Zone

Crawl Space

YOURVIEWHOME.COM

