

JUNIPER FLOOR PLAN

Two Story | 1,581-2,658 SQ. FT. | 4-5 Bedrooms | 2-3 Baths | 2-3 Car Garage



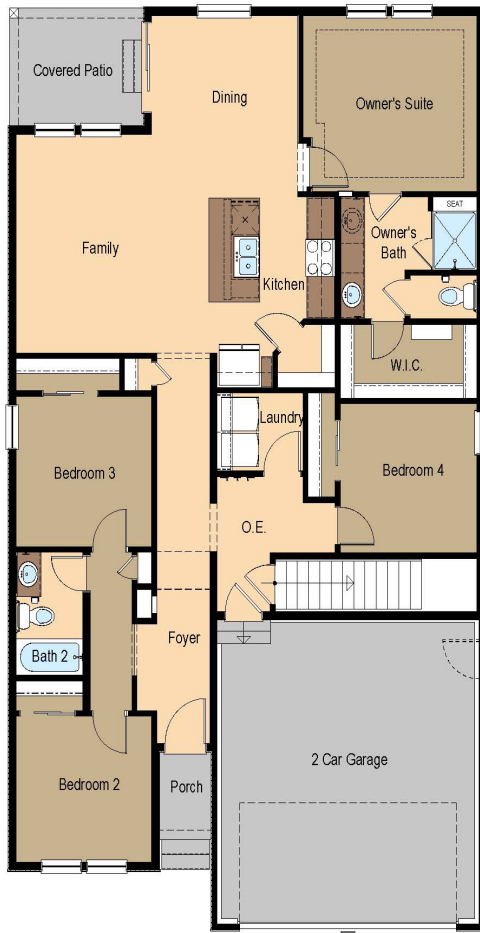
[YOURVIEWHOME.COM](https://www.yourviewhome.com)



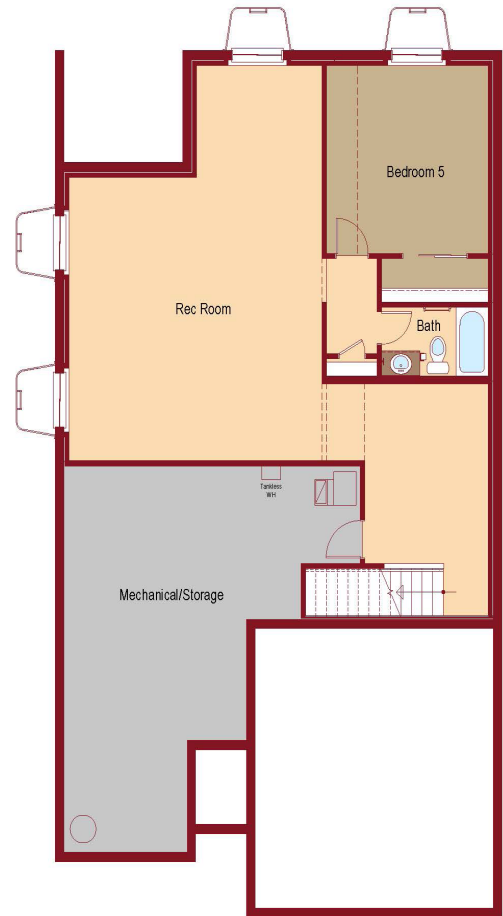
Prices, plans, features, and options are subject to change without notice. All square footage is approximate and varies by elevation. Additional restrictions may apply. See Sales Representative for details. 1/2024

JUNIPER FLOOR PLAN

Two Story | 1,581-2,658 SQ. FT. | 4-5 Bedrooms | 2-3 Baths | 2-3 Car Garage



Main Level



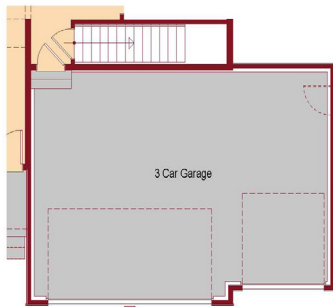
Upper Level

YOURVIEWHOME.COM

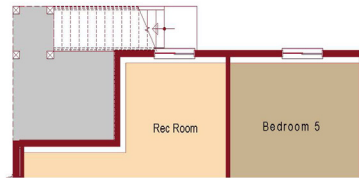


JUNIPER OPTIONS

Two Story | 1,581-2,658 SQ. FT. | 4-5 Bedrooms | 2-3 Baths | 2-3 Car Garage



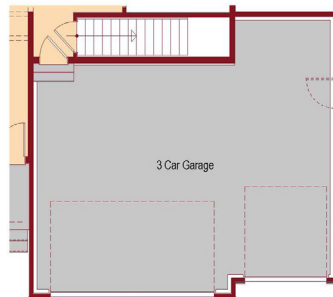
Optional 3 Car Garage - 20' Deep



Partial Basement Plan



Partial Basement Plan



Optional 3 Car Garage - 24' Deep



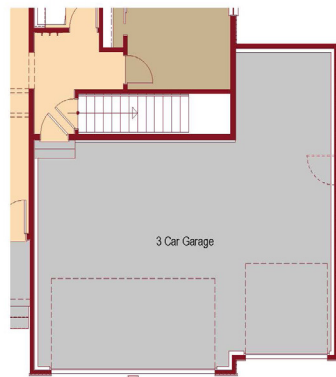
Partial Main Floor Plan



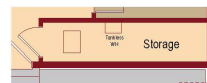
Partial Main Floor Plan

Optional Daylight Basement

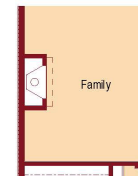
Optional Walkout Basement



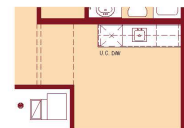
Optional 3 Car Garage - 28' Deep



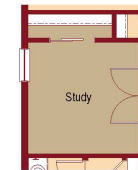
Opt. Crawl Space



Opt. Fireplace



Opt. Wet Bar



Opt Study

YOURVIEWHOME.COM

