



VIEW HOMES

CASCADE VIEW FLOOR PLAN



[YOURVIEWHOME.COM](https://www.yourviewhome.com)

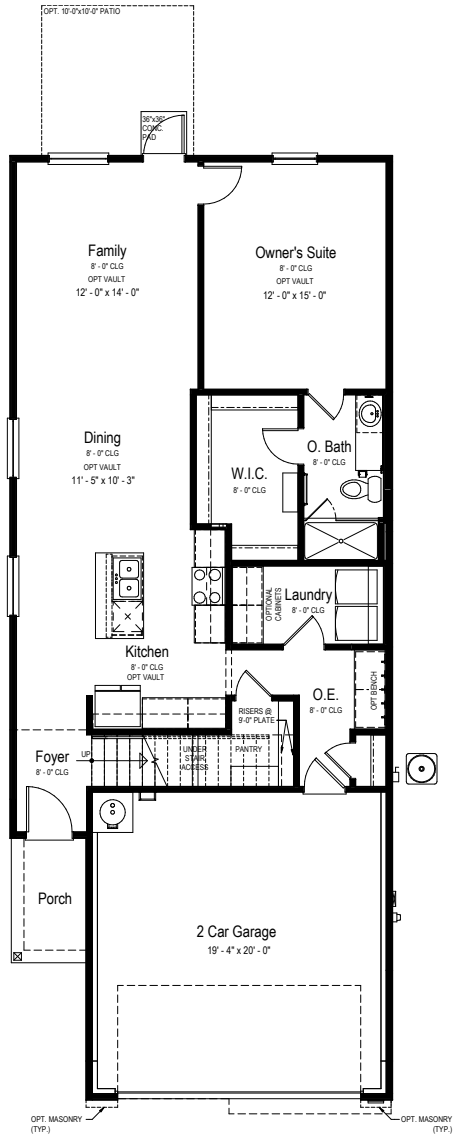


Prices, plans, features, and options are subject to change without notice. All square footage is approximate and varies by elevation. Additional restrictions may apply. See Sales Representative for details. 7/2024



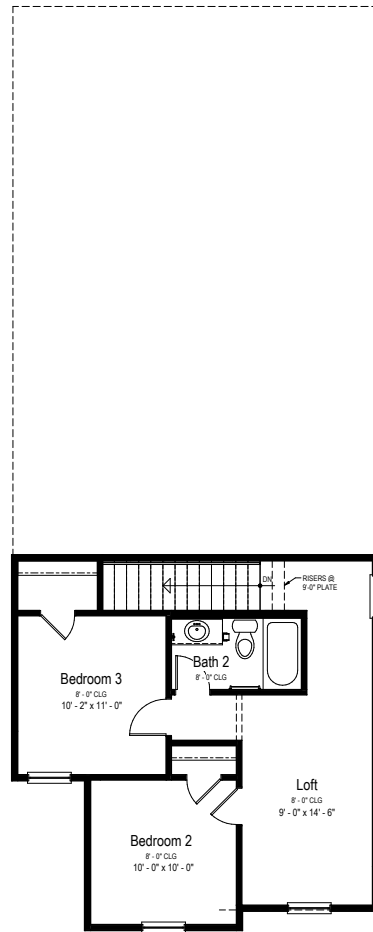
CASCADE VIEW FLOOR PLAN

Two Story | 1,604 SQ. FT. | 3 Bedrooms | 2 Baths | 1.5 Car Garage



Main Floor Plan

SCALE: 1/4" = 1'-0"



Upper Floor Plan

SCALE: 1/4" = 1'-0"

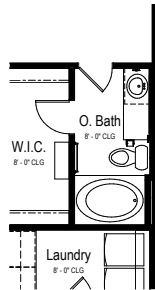
YOURVIEWHOME.COM





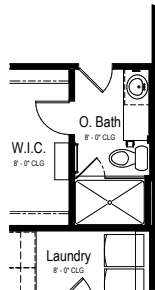
CASCADE VIEW OPTIONS

Two Story | 1,604 SQ. FT. | 3 Bedrooms | 2 Baths | 1.5 Car Garage



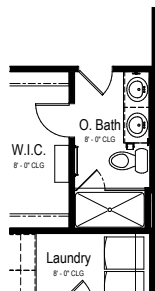
**Opt. Owner's Bath 42x60 Garden Tub
Partial Main Floor Plan**

SCALE: 1/4" = 1'-0"



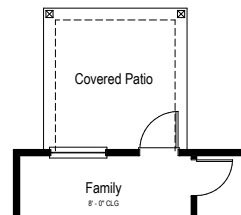
**Opt. Owner's Bath 42x60 Shower
Partial Main Floor Plan**

SCALE: 1/4" = 1'-0"



**Opt. Owner's Bath Double Lav.
Partial Main Floor Plan**

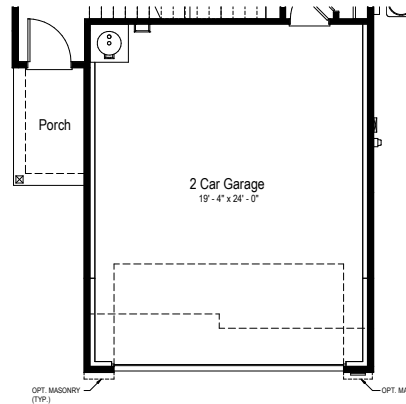
SCALE: 1/4" = 1'-0"



**Opt. Covered Patio
Partial Main Floor Plan**

SCALE: 1/4" = 1'-0"

(+100 Sq. Ft)



**Opt. 4'-0" Garage Extension
Partial Main Floor Plan**

SCALE: 1/4" = 1'-0"

(+80 Sq. Ft)

YOURVIEWHOME.COM

