



VIEW HOMES

MAJESTIC VIEW FLOOR PLAN



[YOURVIEWHOME.COM](https://www.yourviewhome.com)

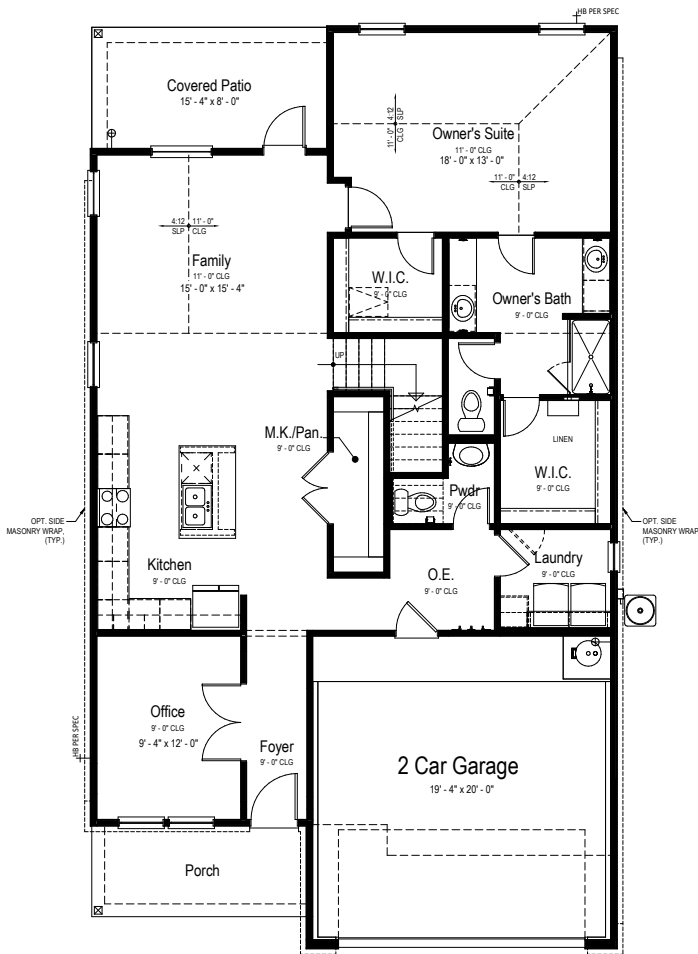


Prices, plans, features, and options are subject to change without notice. All square footage is approximate and varies by elevation. Additional restrictions may apply. See Sales Representative for details. 7/2024



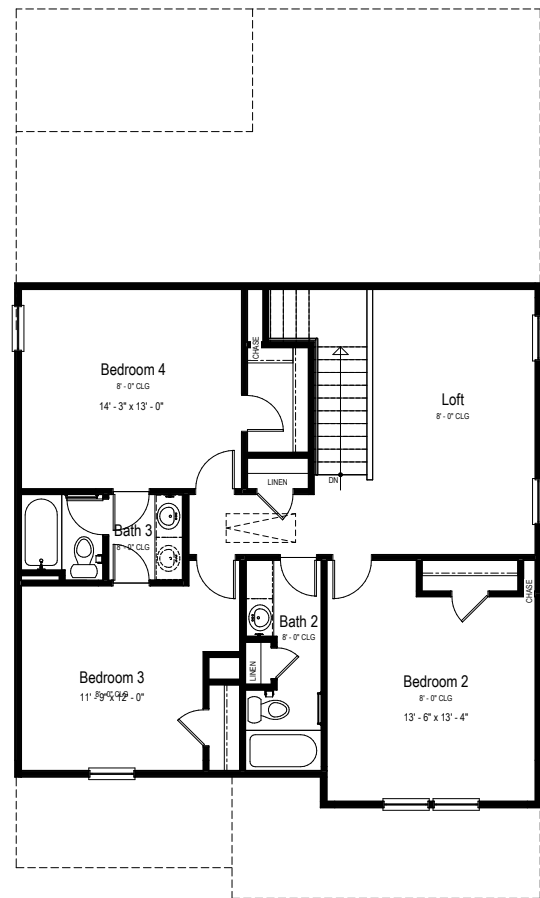
MAJESTIC VIEW FLOOR PLAN

Two Story | 2,330 SQ. FT. | 4 Bedrooms | 3.5 Baths | 2 Car Garage



Main Floor Plan

SCALE: 1/4" = 1'-0"



Upper Floor Plan

SCALE: 1/4" = 1'-0"

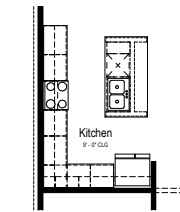
YOURVIEWHOME.COM





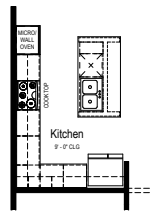
MAJESTIC VIEW OPTIONS

Two Story | 2,330 SQ. FT. | 4 Bedrooms | 3.5 Baths | 2 Car Garage



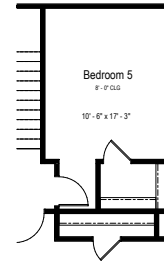
**Opt. Extended Island
Partial Main Floor Plan**

SCALE: 1/4" = 1'-0"



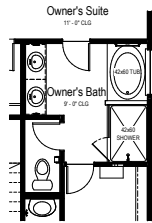
**Opt. Gourmet Kitchen
Partial Main Floor Plan**

SCALE: 1/4" = 1'-0"



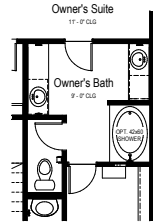
**Opt Bedroom 5
Partial Upper Floor Plan**

SCALE: 1/4" = 1'-0"



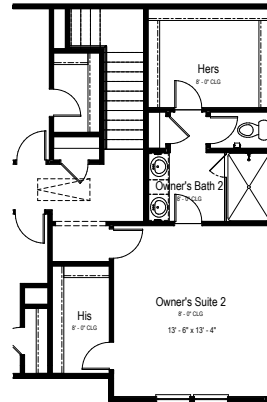
**Opt. 5 Piece
Owner's Bath
Partial Main Floor Plan**

SCALE: 1/4" = 1'-0"



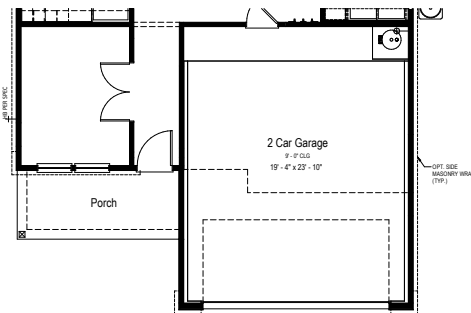
**Opt. Garden Tub
Owner's Bath
Partial Main Floor Plan**

SCALE: 1/4" = 1'-0"



**Opt. Owner's Suite 2
Partial Upper Floor Plan**

SCALE: 1/4" = 1'-0"



**Opt. 4' Garage Extension
Partial Main Floor Plan**

SCALE: 1/4" = 1'-0"

(+80 Sq. Ft)



**Opt. 4' Garage Extension
Partial Upper Floor Plan**

SCALE: 1/4" = 1'-0"

YOURVIEWHOME.COM

