



VIEW HOMES

WILLOW VIEW FLOOR PLAN



[YOURVIEWHOME.COM](https://www.yourviewhome.com)

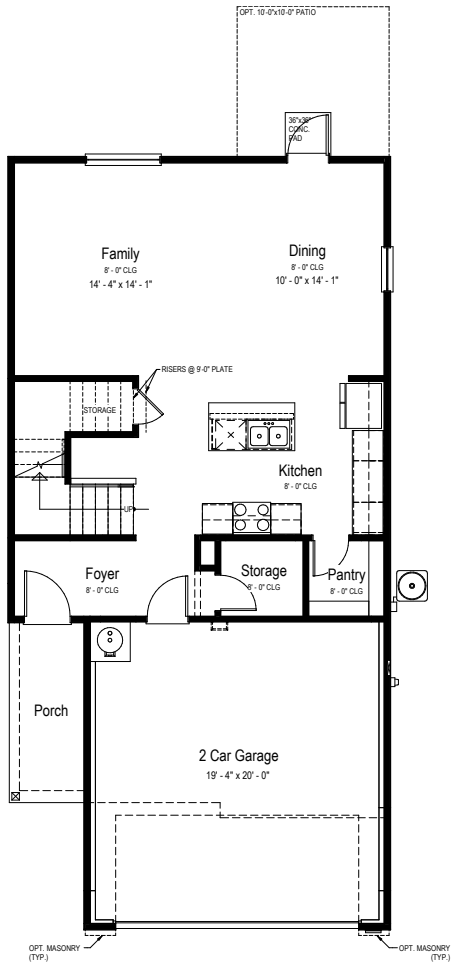


Prices, plans, features, and options are subject to change without notice. All square footage is approximate and varies by elevation. Additional restrictions may apply. See Sales Representative for details. 8/2024



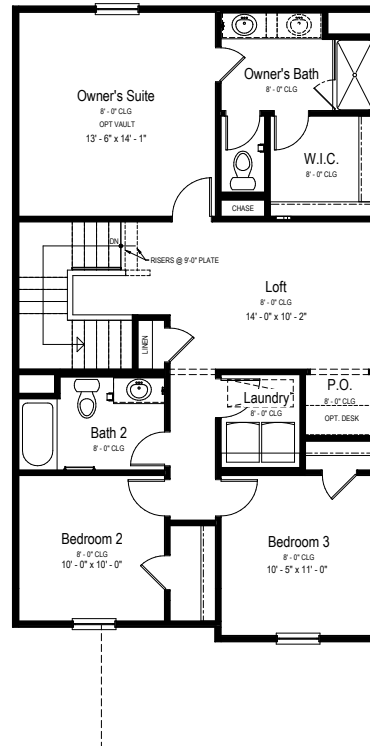
WILLOW VIEW FLOOR PLAN

Two Story | 1,779 SQ. FT. | 3 Bedrooms | 2 Baths | 2 Car Garage



Main Floor Plan

SCALE: 1/4" = 1'-0"



Upper Floor Plan

SCALE: 1/4" = 1'-0"

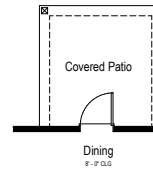
YOURVIEWHOME.COM





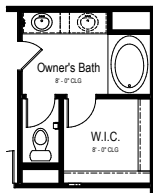
WILLOW VIEW OPTIONS

Two Story | 1,779 SQ. FT. | 4 Bedrooms | 2 Baths | 2 Car Garage



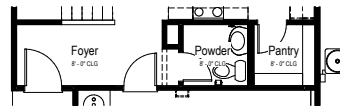
**Opt. Covered Patio
Partial Main Floor Plan**

SCALE: 1/4" = 1'-0"
(+100 Sq. Ft)



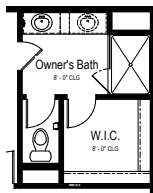
**Opt. Owner's Bath 42x60 Garden Tub
Partial Upper Floor Plan**

SCALE: 1/4" = 1'-0"



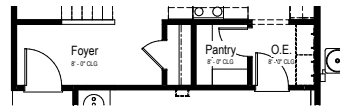
**Opt. Powder
Partial Main Floor Plan**

SCALE: 1/4" = 1'-0"



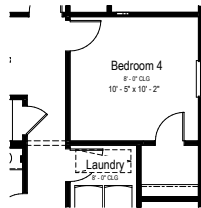
**Opt. Owner's Bath 42x60 Shower
Partial Upper Floor Plan**

SCALE: 1/4" = 1'-0"



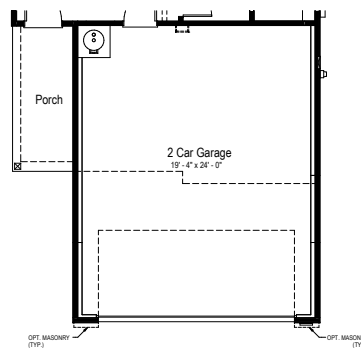
**Opt. O.E.
Partial Main Floor Plan**

SCALE: 1/4" = 1'-0"



**Opt. Bedroom 4
Partial Upper Floor Plan**

SCALE: 1/4" = 1'-0"



**Opt. 4'-0" Garage Extension
Partial Main Floor Plan**

SCALE: 1/4" = 1'-0"
(+80 Sq. Ft)

YOURVIEWHOME.COM

