



VIEW HOMES

RUSTIC VIEW FLOOR PLAN



[YOURVIEWHOME.COM](https://www.yourviewhome.com)

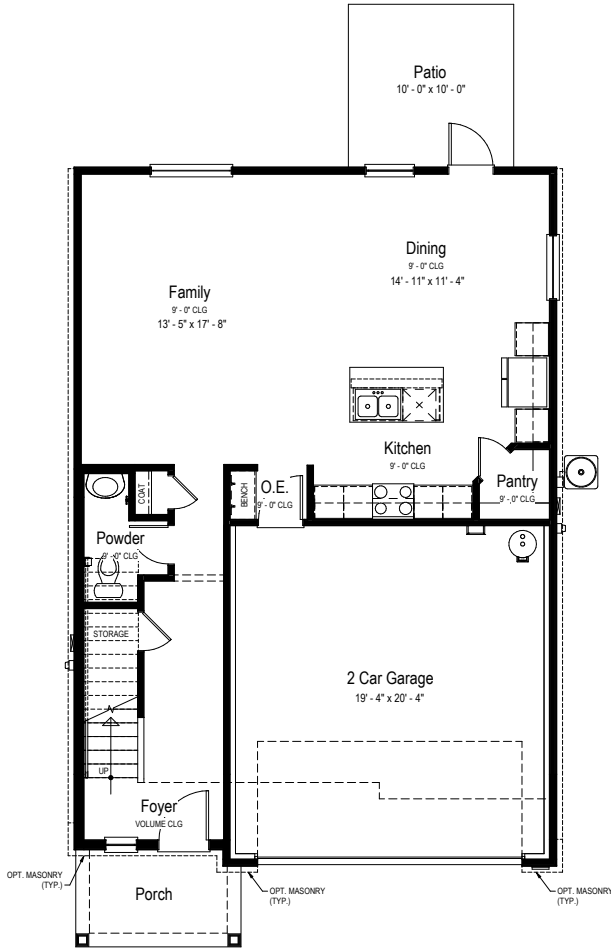


Prices, plans, features, and options are subject to change without notice. All square footage is approximate and varies by elevation. Additional restrictions may apply. See Sales Representative for details. 8/2024



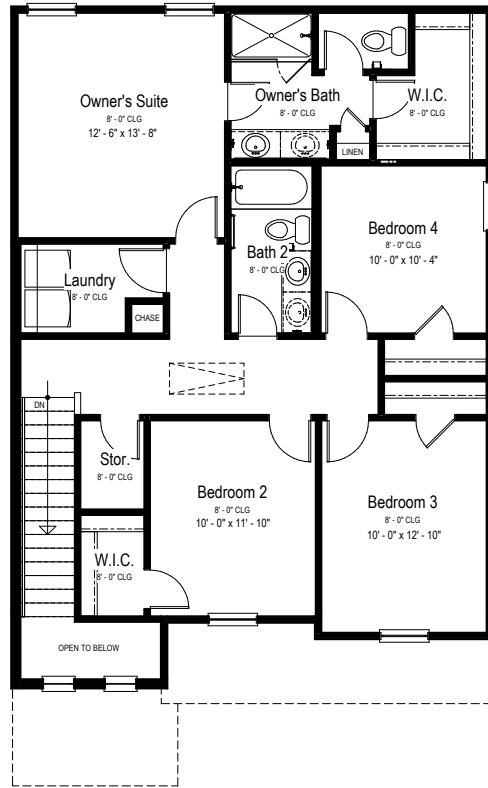
RUSTIC VIEW FLOOR PLAN

Two Story | 1,853 SQ. FT. | 4 Bedrooms | 2.5 Baths | 2 Car Garage



Main Floor Plan

SCALE: 1/4" = 1'-0"



Upper Floor Plan

SCALE: 1/4" = 1'-0"

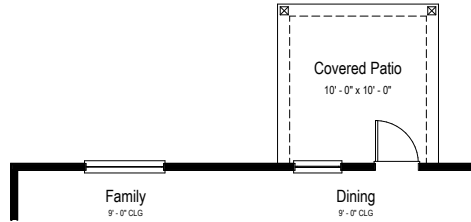
YOURVIEWHOME.COM





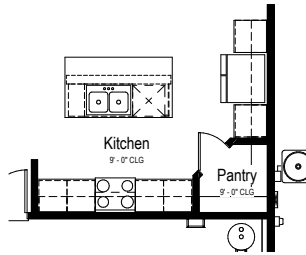
RUSTIC VIEW FLOOR PLAN

Two Story | 1,853 SQ. FT. | 4 Bedrooms | 2.5 Baths | 2 Car Garage



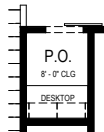
**Opt. Covered Patio
Partial Main Floor Plan**

SCALE: 1/4" = 1'-0"



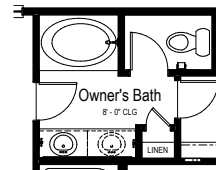
**Opt. Extended Island
Partial Main Floor Plan**

SCALE: 1/4" = 1'-0"



**Opt. P.O. ILO Storage
Partial Upper Floor Plan**

SCALE: 1/4" = 1'-0"



**Opt. Owner's Bath
Partial Upper Floor Plan**

SCALE: 1/4" = 1'-0"

YOURVIEWHOME.COM

