

## ASH FLOOR PLAN

Two Story | 2,376-3,478 sq.ft. | 4-6 beds | 3-4 baths | 2-3 garage



### Craftsman - A

SCALE: 3/16" = 1'-0"



### Farmhouse - B

SCALE: 3/16" = 1'-0"



### Modern - E

SCALE: 3/16" = 1'-0"

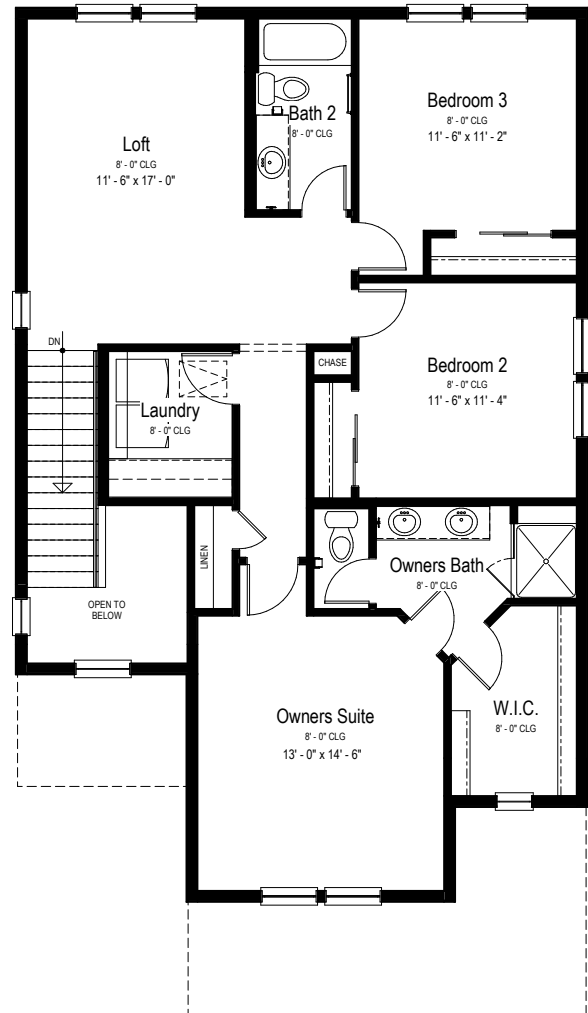
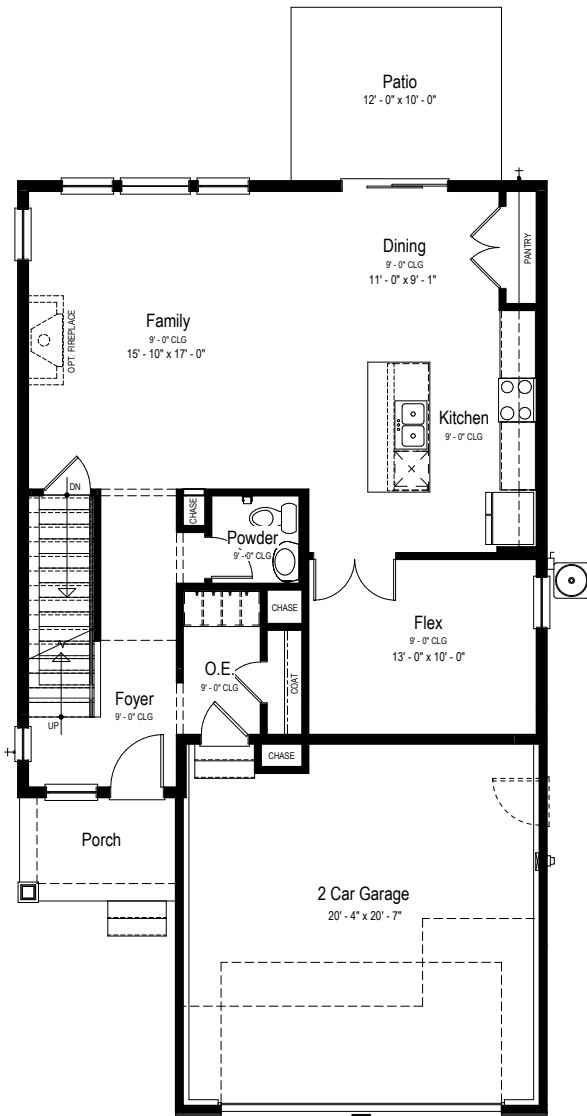
YOURVIEWHOME.COM



Prices, plans, features, and options are subject to change without notice. All square footage is approximate and varies by elevation. Additional restrictions may apply. See Sales Representative for details. 4/2025

## ASH FLOOR PLAN

Two Story | 2,376-3,478 sq.ft. | 4-6 beds | 3-4 baths | 2-3 garage



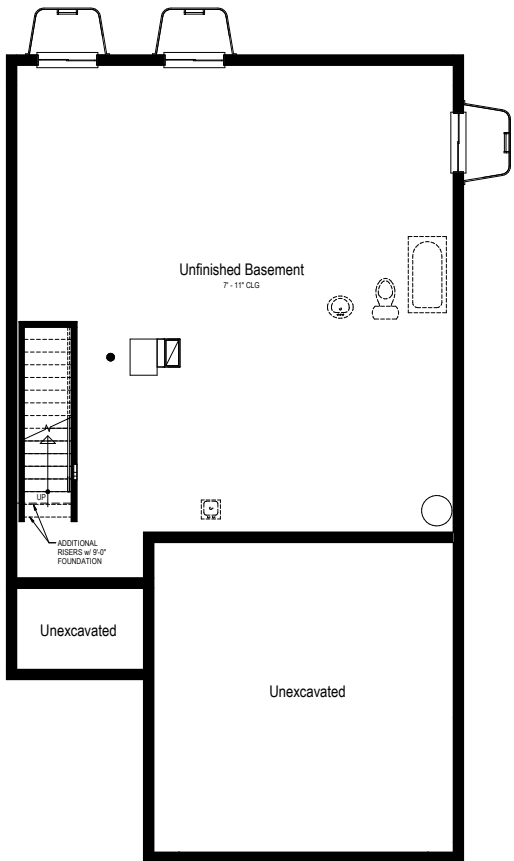
YOURVIEWHOME.COM



Prices, plans, features, and options are subject to change without notice. All square footage is approximate and varies by elevation. Additional restrictions may apply. See Sales Representative for details. 4/2025

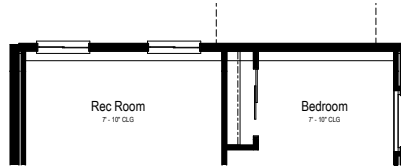
## ASH BASEMENTS

Two Story | 2,376-3,478 sq.ft. | 4-6 beds | 3-4 baths | 2-3 garage



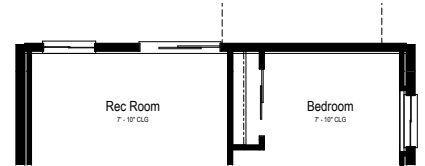
**Basement Plan**

SCALE: 1/4" = 1'-0"



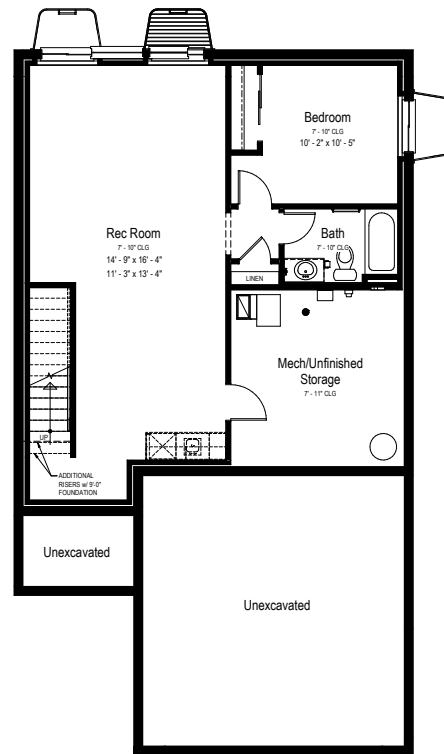
**Opt. Daylight Basement  
Partial Finished Basement Plan**

SCALE: 1/4" = 1'-0"



**Opt. Walkout Basement  
Partial Finished Basement Plan**

SCALE: 1/4" = 1'-0"



**Finished Basement Plan**

SCALE: 1/4" = 1'-0"

(+840 Sq. Ft.)

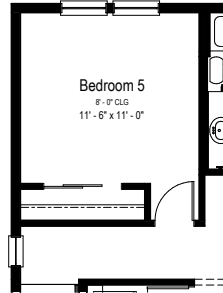
YOURVIEWHOME.COM



Prices, plans, features, and options are subject to change without notice. All square footage is approximate and varies by elevation. Additional restrictions may apply. See Sales Representative for details. 4/2025

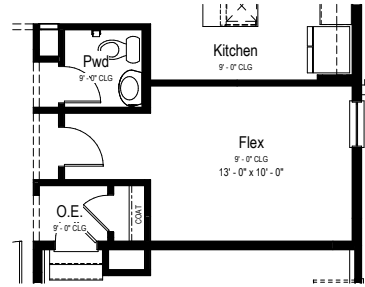
## ASH OPTIONS

Two Story | 2,376-3,478 sq.ft. | 4-6 beds | 3-4 baths | 2-3 garage



**Opt. Bedroom 5 ILO Loft  
Partial Upper Floor Plan**

SCALE: 1/4" = 1'-0"



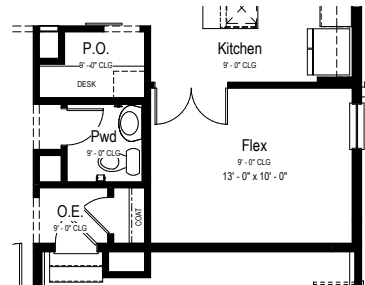
**Opt. Flex Access ILO Ext. O.E.  
Partial Main Floor Plan**

SCALE: 1/4" = 1'-0"



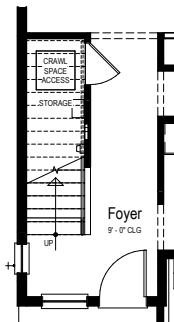
**Opt. Bath 2  
Partial Upper Floor Plan**

SCALE: 1/4" = 1'-0"



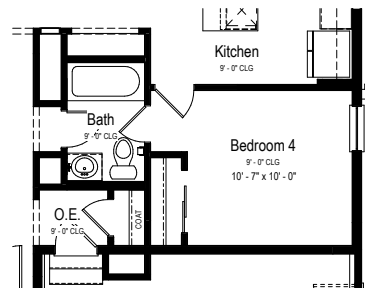
**Opt. P.O. ILO Ext. O.E.  
Partial Main Floor Plan**

SCALE: 1/4" = 1'-0"



**Opt. Crawl Space  
Partial Main Floor Plan**

SCALE: 1/4" = 1'-0"



**Opt. Bed 4 ILO Flex  
Partial Main Floor Plan**

SCALE: 1/4" = 1'-0"

[YOURVIEWHOME.COM](http://YOURVIEWHOME.COM)



Prices, plans, features, and options are subject to change without notice. All square footage is approximate and varies by elevation. Additional restrictions may apply. See Sales Representative for details. 4/2025