

TULIP FLOOR PLAN

Two Story | 1,576-2,178 sq.ft. | 3-4 beds | 2-3 baths | 2.5-3.5 garage



Craftsman - A

SCALE: 3/16" = 1'-0"



Farmhouse - B

SCALE: 3/16" = 1'-0"



Modern - E

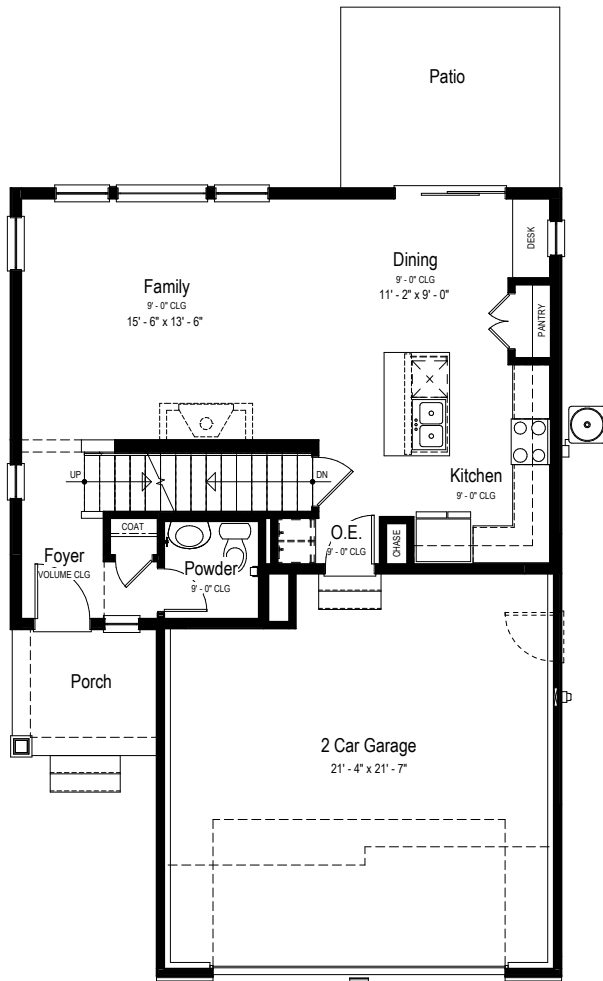
SCALE: 3/16" = 1'-0"

YOURVIEWHOME.COM



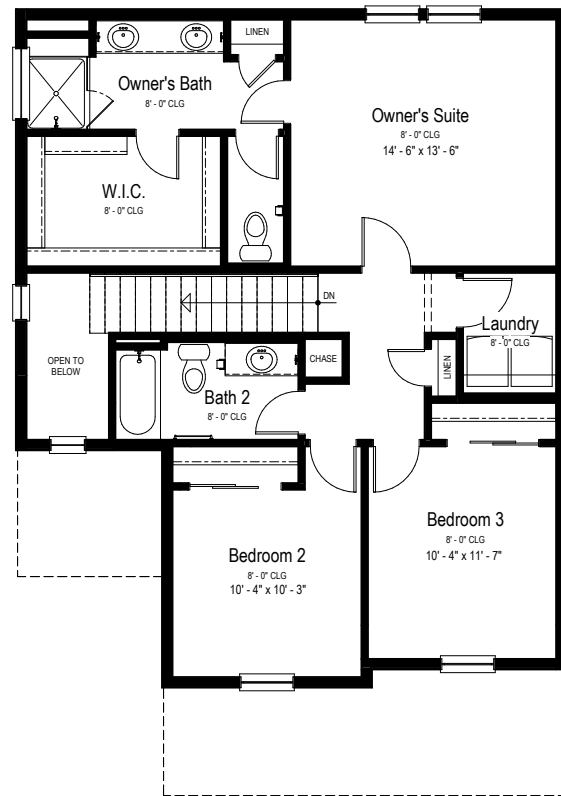
TULIP FLOOR PLAN

Two Story | 1,576-2,178 sq.ft. | 3-4 beds | 2-3 baths | 2.5-3.5 garage



Main Floor Plan

SCALE: 1/4" = 1'-0"



Upper Floor Plan

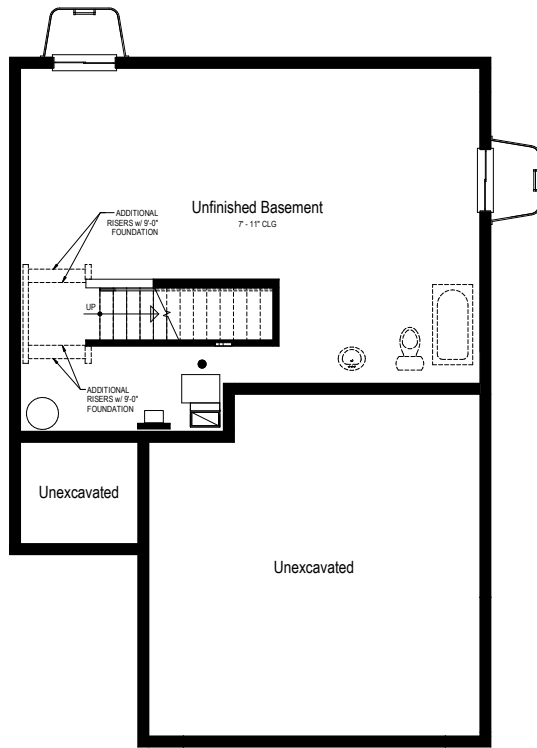
SCALE: 1/4" = 1'-0"

YOURVIEWHOME.COM



TULIP BASEMENTS

Two Story | 1,576-2,178 sq.ft. | 3-4 beds | 2-3 baths | 2.5-3.5 garage



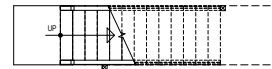
Basement Plan

SCALE: 1/4" = 1'-0"



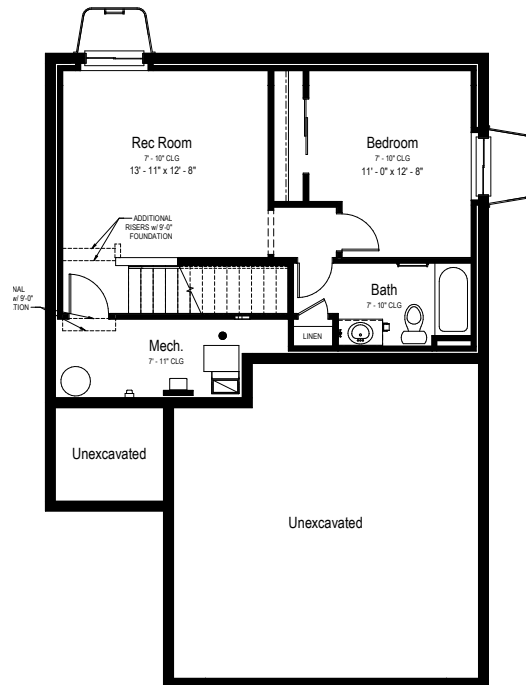
**Opt. Daylight Basement
Partial Finished Basement Plan**

SCALE: 1/4" = 1'-0"



**Opt. Walkout Basement
Partial Finished Basement Plan**

SCALE: 1/4" = 1'-0"



Finished Basement Plan

SCALE: 1/4" = 1'-0"

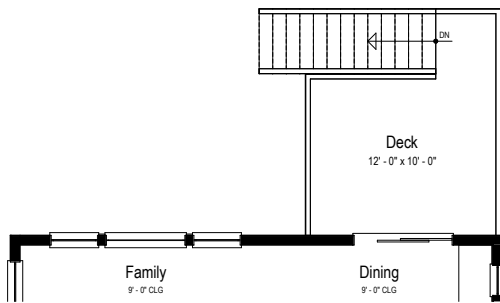
(+553 Sq. Ft)

YOURVIEWHOME.COM



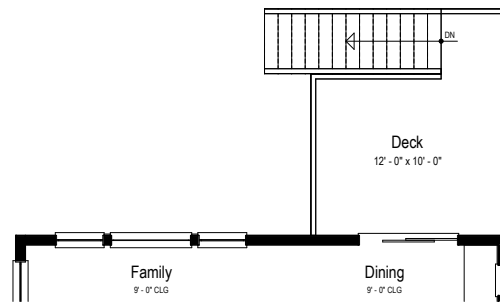
TULIP OPTIONS

Two Story | 1,576-2,178 sq.ft. | 3-4 beds | 2-3 baths | 2.5-3.5 garage



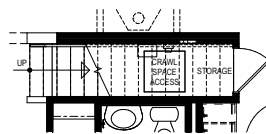
**Opt. Daylight Basement
Partial Main Floor Plan**

SCALE: 1/4" = 1'-0"



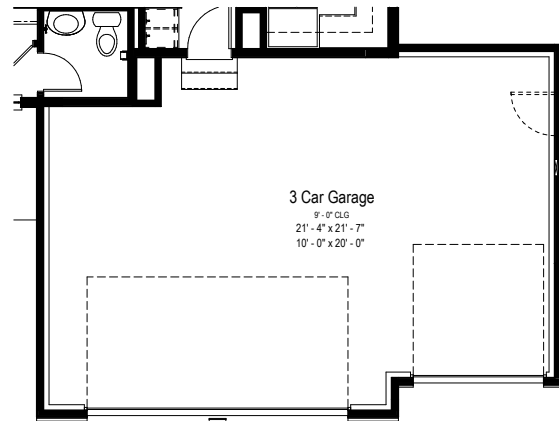
**Opt. Walkout Basement
Partial Main Floor Plan**

SCALE: 1/4" = 1'-0"



**Opt. Crawl Space
Partial Main Floor Plan**

SCALE: 1/4" = 1'-0"



**Opt. 3 Car Garage
Partial Main Floor Plan**

SCALE: 1/4" = 1'-0"

YOURVIEWHOME.COM

