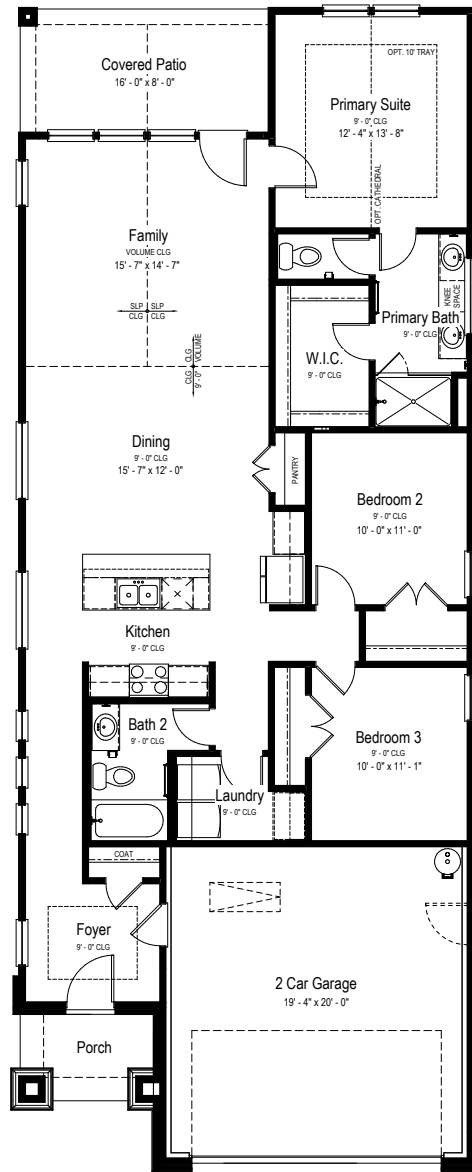




VIEW HOMES

LIVE OAK FLOOR PLAN

Single Story | 1,524 SQ.FT. | 3 Beds | 2 Baths | 2 Car Garage

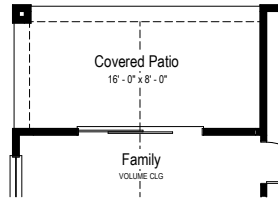


MAIN FLOOR

YOURVIEWHOME.COM • 210.817.5507

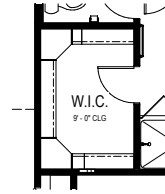


Prices, plans, features, and options are subject to change without notice. All square footage is approximate and varies by elevation. Additional restrictions may apply. See Sales Representative for details. 07/2025



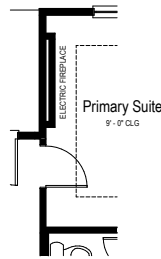
Opt. SGD @ Family Room
Partial Main Floor Plan

SCALE: 1/4" = 1'-0"



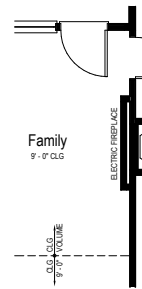
Opt. Primary Suite W.I.C.
Partial Main Floor Plan

SCALE: 1/4" = 1'-0"



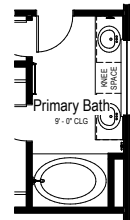
Opt. Fireplace
@ Primary Suite
Partial Main Floor Plan

SCALE: 1/4" = 1'-0"



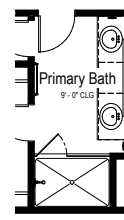
Opt. Fireplace
@ Family Room
Partial Main Floor Plan

SCALE: 1/4" = 1'-0"



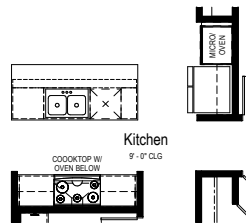
Opt. Primary Bath
Tub/Shower ILO Shower
Partial Main Floor Plan

SCALE: 1/4" = 1'-0"



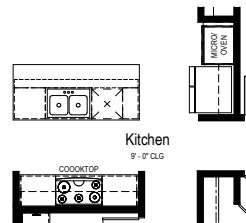
Opt. Primary Bath
Drawer Stack ILO Kneespace
Partial Main Floor Plan

SCALE: 1/4" = 1'-0"



Opt. Chef Kitchen
Partial Main Floor Plan

SCALE: 1/4" = 1'-0"



Opt. Gourmet Kitchen
Partial Main Floor Plan

SCALE: 1/4" = 1'-0"

